

## DDR2 antibody [C2C3], C-term

Cat. No. GTX102651

|             |                   |
|-------------|-------------------|
| Host        | Rabbit            |
| Clonality   | Polyclonal        |
| Isotype     | IgG               |
| Application | WB, ICC/IF, IHC-P |
| Reactivity  | Human, Mouse, Rat |

★★★★★ Review ( 1 )

Package  
100 µl, 25 µl

## APPLICATION

## Application Note

\*Optimal dilutions/concentrations should be determined by the researcher.

| Suggested dilution | Recommended dilution |
|--------------------|----------------------|
| WB                 | 1:1000-1:10000       |
| ICC/IF             | Assay dependent      |
| IHC-P              | 1:100-1:1000         |

Not tested in other applications.

Calculated MW 97 kDa. ( [Note](#) )

## PROPERTIES

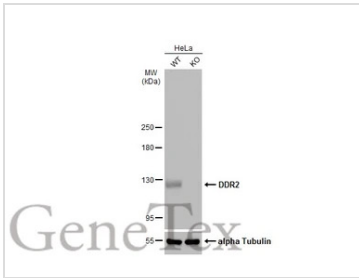
|               |  |
|---------------|--|
| Form          | Liquid   |
| Buffer        | PBS, 1% BSA, 20% Glycerol  |
| Preservative  | 0.025% ProClin 300   |
| Storage       | Store as concentrated solution. Centrifuge briefly prior to opening vial. For short-term storage (1-2 weeks), store at 4°C. For long-term storage, aliquot and store at -20°C or below. Avoid multiple freeze-thaw cycles. |
| Concentration | 0.43 mg/ml (Please refer to the vial label for the specific concentration.)  |
| Immunogen     | Recombinant protein encompassing a sequence within the Intracellular domain of human DDR2. The exact sequence is proprietary.  |
| Purification  | Purified by antigen-affinity chromatography.   |
| Conjugation   | Unconjugated   |

**Note** For laboratory research use only. Not for any clinical, therapeutic, or diagnostic use in humans or animals. Not for animal or human consumption.

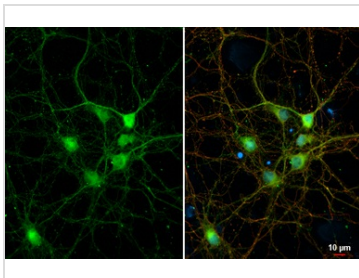
Purchasers shall not, and agree not to enable third parties to, analyze, copy, reverse engineer or otherwise attempt to determine the structure or sequence of the product.



For full product information, images and publications, please visit our [website](#).

**DATA IMAGES**

**GTX102651 WB Image**

Wild-type (WT) and DDR2 (KO) HeLa cell extracts (30 µg) were separated by 5% SDS-PAGE, and the membrane was blotted with DDR2 antibody [C2C3], C-term (GTX102651) diluted at 1:1000. The HRP-conjugated anti-rabbit IgG antibody (GTX213110-01) was used to detect the primary antibody.

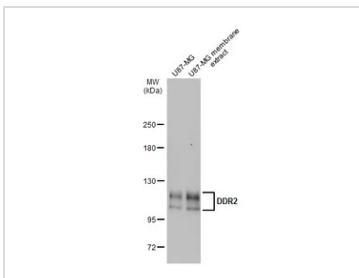

**GTX102651 ICC/IF Image**

DDR2 antibody [C2C3], C-term detects DDR2 protein at cell membrane by immunofluorescent analysis. Sample: DIV9 rat E18 primary cortical neuron and glia cells were fixed in 4% paraformaldehyde at RT for 15 min.

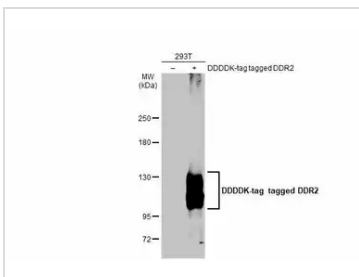
Green: DDR2 stained by DDR2 antibody [C2C3], C-term (GTX102651) diluted at 1:250.

Red: Tau, an Axon marker, stained by Tau antibody [GT287] (GTX634809) diluted at 1:500.

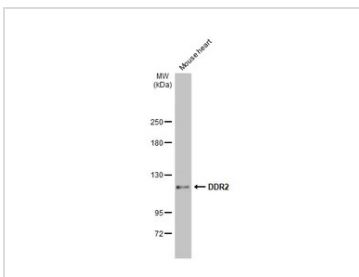
Blue: Fluoroshield with DAPI (GTX30920).


**GTX102651 WB Image**

U87-MG whole cell and membrane extracts (30 µg) were separated by 5% SDS-PAGE, and the membrane was blotted with DDR2 antibody [C2C3], C-term (GTX102651) diluted at 1:1000. The HRP-conjugated anti-rabbit IgG antibody (GTX213110-01) was used to detect the primary antibody.


**GTX102651 WB Image**

Non-transfected (–) and transfected (+) 293T whole cell extracts (30 µg) were separated by 5% SDS-PAGE, and the membrane was blotted with DDR2 antibody [C2C3], C-term (GTX102651) diluted at 1:3000. The HRP-conjugated anti-rabbit IgG antibody (GTX213110-01) was used to detect the primary antibody.


**GTX102651 WB Image**

Mouse tissue extract (50 µg) was separated by 5% SDS-PAGE, and the membrane was blotted with DDR2 antibody [C2C3], C-term (GTX102651) diluted at 1:1000. The HRP-conjugated anti-rabbit IgG antibody (GTX213110-01) was used to detect the primary antibody.



For full product information, images and publications, please visit our [website](https://www.genetex.com).