

P2X3 antibody

Cat. No. GTX10267

Host	Guinea pig
Clonality	Polyclonal
Isotype	IgG
Application	IHC
Reactivity	Rat

Reference (1)
Package
50 µl

APPLICATION

Application Note

*Optimal dilutions/concentrations should be determined by the researcher.

Suggested dilution	Recommended dilution
IHC	1:100-1:1000
Not tested in other applications.	

Calculated MW 44 kDa. ([Note](#))

PROPERTIES

Form	Liquid
Buffer	Serum
Preservative	0.05% Sodium azide
Storage	Store as concentrated solution. Centrifuge briefly prior to opening vial. For short-term storage (1-2 weeks), store at 4°C. For long-term storage, aliquot and store at -20°C or below. Avoid multiple freeze-thaw cycles.
Immunogen	VEKQSTDSGAYSIGH-Corresponding to
Purification	Unpurified
Conjugation	Unconjugated

Note

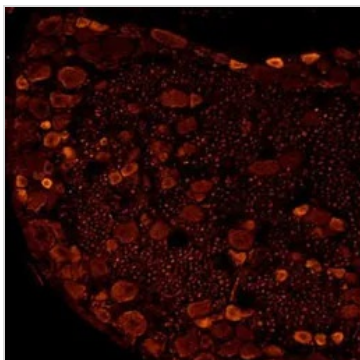
For laboratory research use only. Not for any clinical, therapeutic, or diagnostic use in humans or animals. Not for animal or human consumption.

Purchasers shall not, and agree not to enable third parties to, analyze, copy, reverse engineer or otherwise attempt to determine the structure or sequence of the product.



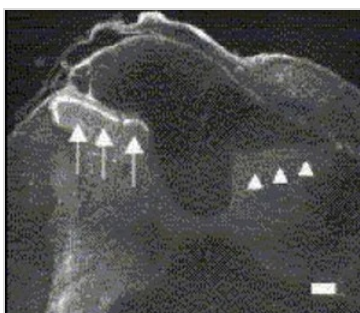
For full product information, images and publications, please visit our [website](#).

DATA IMAGES



GTX10267 IHC Image

IHC analysis of rat DRG tissue using GTX10267 P2X3 antibody.



GTX10267 IHC Image

IHC analysis of rat spinal cord segment C6 using GTX10267 P2X3 antibody. Non-petidergic fibers expressing P2X3 receptor for ATP are present in lamina II of the contralateral dorsal horn (arrows). The P2X3-positive fibers are eliminated from the rat dorsal horn ipsilateral to the rhizotomy (arrow heads).
Dilution : 1:25,000



For full product information, images and publications, please visit our [website](#).