

Peregrin antibody [N1N2], N-term

Cat. No. GTX102778

Host	Rabbit
Clonality	Polyclonal
Isotype	IgG
Application	WB, IHC-P
Reactivity	Human, Mouse

Reference (1)
 Package
 100 µl, 25 µl

APPLICATION

Application Note

*Optimal dilutions/concentrations should be determined by the researcher.

Suggested dilution	Recommended dilution
WB	1:500-1:3000
IHC-P	Assay dependent

Not tested in other applications.

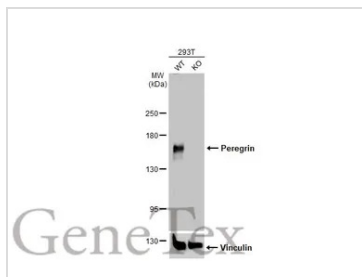
Calculated MW 137 kDa. ([Note](#))

PROPERTIES

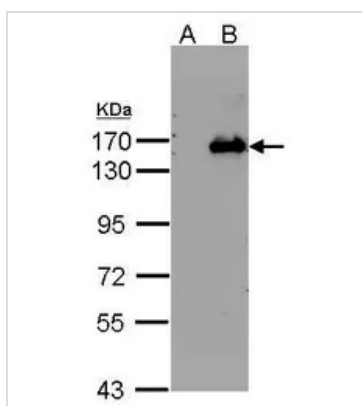
Form	Liquid
Buffer	PBS, 1% BSA, 20% Glycerol
Preservative	0.025% ProClin 300
Storage	Store as concentrated solution. Centrifuge briefly prior to opening vial. For short-term storage (1-2 weeks), store at 4°C. For long-term storage, aliquot and store at -20°C or below. Avoid multiple freeze-thaw cycles.
Concentration	0.19 mg/ml (Please refer to the vial label for the specific concentration.)
Immunogen	Recombinant protein encompassing a sequence within the N-terminus region of human Peregrin. The exact sequence is proprietary.
Purification	Purified by antigen-affinity chromatography.
Conjugation	Unconjugated
Note	For laboratory research use only. Not for any clinical, therapeutic, or diagnostic use in humans or animals. Not for animal or human consumption. Purchasers shall not, and agree not to enable third parties to, analyze, copy, reverse engineer or otherwise attempt to determine the structure or sequence of the product.



For full product information, images and publications, please visit our [website](#).

DATA IMAGES

GTX102778 WB Image

Wild-type (WT) and Peregrin knockout (KO) 293T cell extracts (30 μ g) were separated by 5% SDS-PAGE, and the membrane was blotted with Peregrin antibody [N1N2], N-term (GTX102778) diluted at 1:1500. The HRP-conjugated anti-rabbit IgG antibody (GTX213110-01) was used to detect the primary antibody.


GTX102778 WB Image

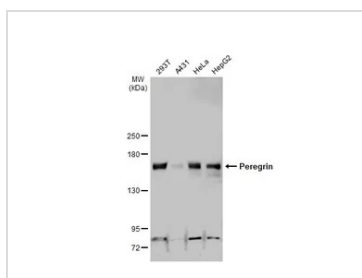
Western Blot analysis of BRPF1 expression in transfected 293T cell line by BRPF1 polyclonal antibody.

A: Non-transfected lysate.

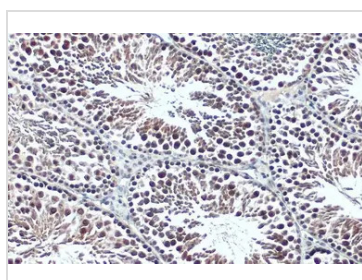
B: BRPF1 transfected lysate.

7.5% SDS PAGE

GTX102778 diluted at 1:500


GTX102778 WB Image

Various whole cell extracts (30 μ g) were separated by 5% SDS-PAGE, and the membrane was blotted with Peregrin antibody [N1N2], N-term (GTX102778) diluted at 1:500. The HRP-conjugated anti-rabbit IgG antibody (GTX213110-01) was used to detect the primary antibody.


GTX102778 IHC-P Image

Peregrin antibody [N1N2], N-term detects Peregrin protein at nucleus by immunohistochemical analysis.

Sample: Paraffin-embedded mouse testis.

Peregrin stained by Peregrin antibody [N1N2], N-term (GTX102778) diluted at 1:500.

Antigen Retrieval: Citrate buffer, pH 6.0, 15 min



For full product information, images and publications, please visit our [website](https://www.genetex.com).