

ProDynorphin antibody

Cat. No. GTX10280

Host	Guinea pig
Clonality	Polyclonal
Isotype	IgG
Applications	IHC-Fr, IHC
Reactivity	Mouse, Rat

References (4)

Package

50 µl

Applications

Application Note

*Optimal dilutions/concentrations should be determined by the researcher.

Suggested dilution	Recommended dilution
IHC-Fr	1:250-1:1000
IHC	Assay dependent

Not tested in other applications.

Properties

Form	Liquid
Buffer	PBS, 30% Glycerol
Preservative	0.05% Sodium azide
Storage	Store as concentrated solution. Centrifuge briefly prior to opening vial. For short-term storage (1-2 weeks), store at 4°C. For long-term storage, aliquot and store at -20°C or below. Avoid multiple freeze-thaw cycles.
Concentration	1 mg/ml (Please refer to the vial label for the specific concentration.)
Immunogen	SQENPNTYSEDLDV. Corresponding to residues 235-248 of the rat proDynorphin.
Purification	Purified by affinity chromatography
Conjugation	Unconjugated

Note

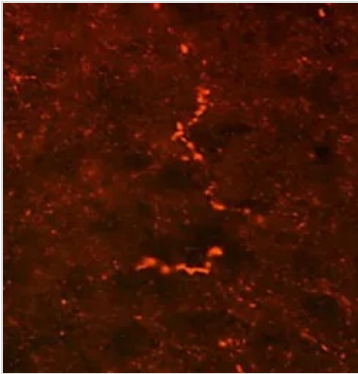
For laboratory research use only. Not for any clinical, therapeutic, or diagnostic use in humans or animals. Not for animal or human consumption.

Purchasers shall not, and agree not to enable third parties to, analyze, copy, reverse engineer or otherwise attempt to determine the structure or sequence of the product.



For full product information, images and publications, please visit our [website](#).

DATA IMAGES



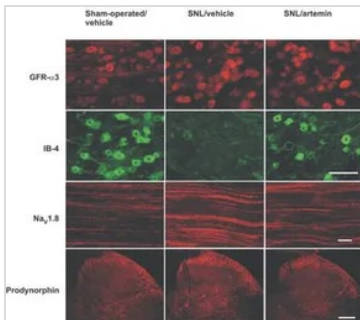
GTX10280 IHC Image

IHC analysis of rat hypothalamus tissue using GTX10280 ProDynorphin antibody.



GTX10280 IHC Image

IHC analysis of mouse spinal cord tissue using GTX10280 ProDynorphin antibody.



GTX10280 IHC Image

IHC analysis of ipsilateral L5 DRG, dorsal spinal cords and sciatic nerves of SNL rats using GTX10280 ProDynorphin antibody. Immunofluorescent labeling was done 14 d after sham or SNL surgery and treatment with vehicle or artemin starting on day 3 after surgery.



For full product information, images and publications, please visit our [website](#).