

# HSD3B2 antibody [N3C3]

**Cat. No. GTX102813**

<b>Host</b>	Rabbit
<b>Clonality</b>	Polyclonal
<b>Isotype</b>	IgG
<b>Applications</b>	WB, ICC/IF, IHC-P
<b>Reactivity</b>	Human, Mouse

References ( 3 )

Package

100 µl, 25 µl

## Applications

### Application Note

\*Optimal dilutions/concentrations should be determined by the researcher.

Suggested dilution	Recommended dilution
WB	1:500-1:3000
ICC/IF	1:100-1:1000
IHC-P	1:100-1:1000

Not tested in other applications.

**Calculated MW** 42 kDa. ( [Note](#) )

## Properties

<b>Form</b>	Liquid
<b>Buffer</b>	PBS, 20% Glycerol
<b>Preservative</b>	0.025% ProClin 300
<b>Storage</b>	Store as concentrated solution. Centrifuge briefly prior to opening vial. For short-term storage (1-2 weeks), store at 4°C. For long-term storage, aliquot and store at -20°C or below. Avoid multiple freeze-thaw cycles.
<b>Concentration</b>	1.24 mg/ml (Please refer to the vial label for the specific concentration.)
<b>Immunogen</b>	Recombinant protein encompassing a sequence within the center region of human HSD3B2. The exact sequence is proprietary.
<b>Purification</b>	Purified by antigen-affinity chromatography.
<b>Conjugation</b>	Unconjugated

### Note

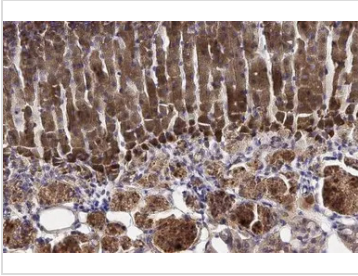
For laboratory research use only. Not for any clinical, therapeutic, or diagnostic use in humans or animals. Not for animal or human consumption.

Purchasers shall not, and agree not to enable third parties to, analyze, copy, reverse engineer or otherwise attempt to determine the structure or sequence of the product.



For full product information, images and publications, please visit our [website](#).

## DATA IMAGES



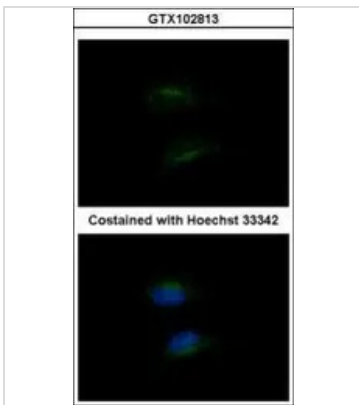
### GTx102813 IHC-P Image

HSD3B2 antibody [N3C3] detects HSD3B2 protein at cytoplasm by immunohistochemical analysis.

Sample: Paraffin-embedded mouse adrenal gland.

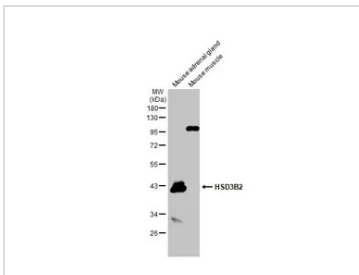
HSD3B2 stained by HSD3B2 antibody [N3C3] (GTx102813) diluted at 1:500.

Antigen Retrieval: Citrate buffer, pH 6.0, 15 min



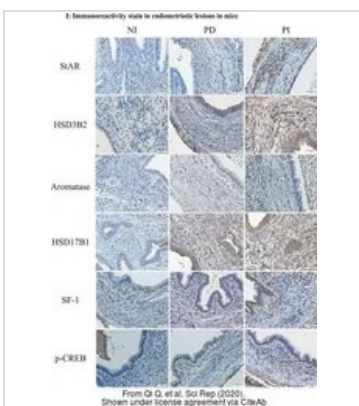
### GTx102813 ICC/IF Image

Immunofluorescence analysis of methanol-fixed HeLa, using HSD3B2(GTx102813) antibody at 1:200 dilution.



### GTx102813 WB Image

Mouse tissue extract (50 µg) were separated by 10% SDS-PAGE, and the membrane was blotted with HSD3B2 antibody [N3C3] (GTx102813) diluted at 1:1000. The HRP-conjugated anti-rabbit IgG antibody (GTx213110-01) was used to detect the primary antibody.



### GTx102813 IHC-P Image

The data was published in the journal Sci Rep in 2020.[PMID: 31992765](https://pubmed.ncbi.nlm.nih.gov/31992765/)



For full product information, images and publications, please visit our [website](https://www.genetex.com).