

## SHP1 antibody

**Cat. No. GTX102864**

<b>Host</b>	Rabbit
<b>Clonality</b>	Polyclonal
<b>Isotype</b>	IgG
<b>Applications</b>	WB, IHC-P, IHC-Fr, IP
<b>Reactivity</b>	Human, Mouse, Rat

References ( 2 )

★★★★★ Review ( 1 )

Package

100 µl, 25 µl

## Applications

**Application Note**

\*Optimal dilutions/concentrations should be determined by the researcher.

Suggested dilution	Recommended dilution
WB	1:500-1:3000
IHC-P	1:100-1:1000
IHC-Fr	Assay dependent
IP	1:100-1:500

Not tested in other applications.

**Calculated MW** 68 kDa. ( [Note](#) )

## Properties

<b>Form</b>	Liquid
<b>Buffer</b>	PBS, 20% Glycerol
<b>Preservative</b>	0.025% ProClin 300
<b>Storage</b>	Store as concentrated solution. Centrifuge briefly prior to opening vial. For short-term storage (1-2 weeks), store at 4°C. For long-term storage, aliquot and store at -20°C or below. Avoid multiple freeze-thaw cycles.
<b>Concentration</b>	1.51 mg/ml (Please refer to the vial label for the specific concentration.)
<b>Immunogen</b>	Recombinant protein encompassing a sequence within the center region of human SHP1. The exact sequence is proprietary.
<b>Purification</b>	Purified by antigen-affinity chromatography.
<b>Conjugation</b>	Unconjugated

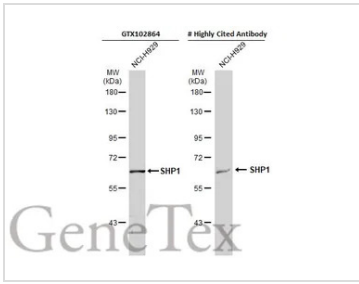
**Note**

For laboratory research use only. Not for any clinical, therapeutic, or diagnostic use in humans or animals. Not for animal or human consumption.

Purchasers shall not, and agree not to enable third parties to, analyze, copy, reverse engineer or otherwise attempt to determine the structure or sequence of the product.

For full product information, images and publications, please visit our [website](#).

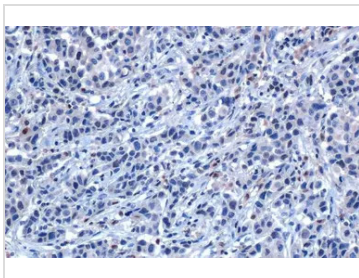
DATA IMAGES



**GTX102864 WB Image**

Whole cell extract (30 µg) was separated by 7.5% SDS-PAGE, and the membranes were blotted with SHP1 antibody (GTX102864) diluted at 1:1000 and competitor's antibody (# Highly Cited Antibody) diluted at 1:500. The HRP-conjugated anti-rabbit IgG antibody (GTX213110-01) was used to detect the primary antibody.

\*The competitor is not affiliated with GeneTex and does not endorse this product.



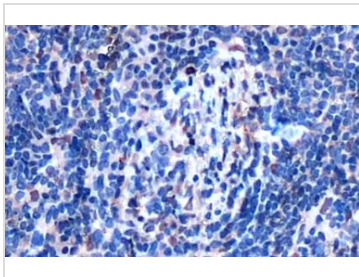
**GTX102864 IHC-P Image**

SHP1 antibody detects SHP1 protein at cytoplasm and nucleus by immunohistochemical analysis.

Sample: Paraffin-embedded human breast carcinoma.

SHP1 stained by SHP1 antibody (GTX102864) diluted at 1:500.

Antigen Retrieval: Citrate buffer, pH 6.0, 15 min



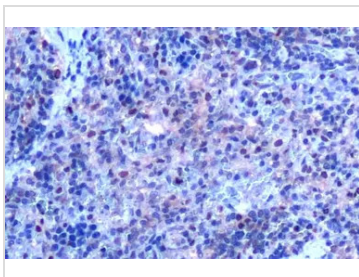
**GTX102864 IHC-P Image**

SHP1 antibody detects SHP1 protein at cytoplasm and nucleus by immunohistochemical analysis.

Sample: Paraffin-embedded mouse liver.

SHP1 stained by SHP1 antibody (GTX102864) diluted at 1:500.

Antigen Retrieval: Citrate buffer, pH 6.0, 15 min



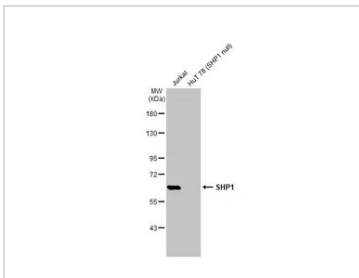
**GTX102864 IHC-P Image**

SHP1 antibody detects SHP1 protein at cytoplasm and nucleus by immunohistochemical analysis.

Sample: Paraffin-embedded rat liver.

SHP1 stained by SHP1 antibody (GTX102864) diluted at 1:500.

Antigen Retrieval: Citrate buffer, pH 6.0, 15 min



**GTX102864 WB Image**

Various whole cell extracts (10 µg) were separated by 7.5% SDS-PAGE, and the membrane was blotted with SHP1 antibody (GTX102865) diluted at 1:1000. The HRP-conjugated anti-rabbit IgG antibody (GTX213110-01) was used to detect the primary antibody.



For full product information, images and publications, please visit our [website](#).