

## DNA polymerase delta antibody

Cat. No. GTX102888

Host	Rabbit
Clonality	Polyclonal
Isotype	IgG
Applications	WB, ICC/IF, IHC-P
Reactivity	Human, Rat

References ( 1 )

Package

100 µl, 25 µl

## Applications

## Application Note

\*Optimal dilutions/concentrations should be determined by the researcher.

Suggested dilution	Recommended dilution
WB	1:500-1:3000
ICC/IF	1:100-1:1000
IHC-P	1:100-1:1000

Not tested in other applications.

Calculated MW 124 kDa. ( [Note](#) )

## Properties

Form	Liquid
Buffer	0.1M Tris, 0.1M Glycine, 10% Glycerol
Preservative	0.01% Thimerosal
Storage	Store as concentrated solution. Centrifuge briefly prior to opening vial. For short-term storage (1-2 weeks), store at 4°C. For long-term storage, aliquot and store at -20°C or below. Avoid multiple freeze-thaw cycles.
Concentration	0.56 mg/ml (Please refer to the vial label for the specific concentration.)
Immunogen	Recombinant protein encompassing a sequence within the center region of human DNA polymerase delta. The exact sequence is proprietary.
Purification	Purified by antigen-affinity chromatography.
Conjugation	Unconjugated

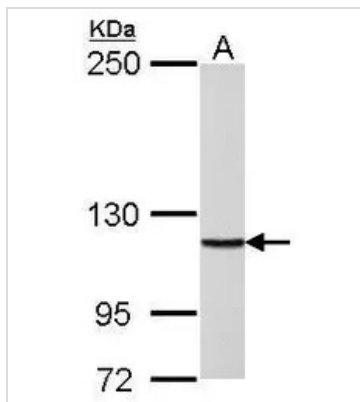
## Note

For laboratory research use only. Not for any clinical, therapeutic, or diagnostic use in humans or animals. Not for animal or human consumption.

Purchasers shall not, and agree not to enable third parties to, analyze, copy, reverse engineer or otherwise attempt to determine the structure or sequence of the product.



For full product information, images and publications, please visit our [website](#).

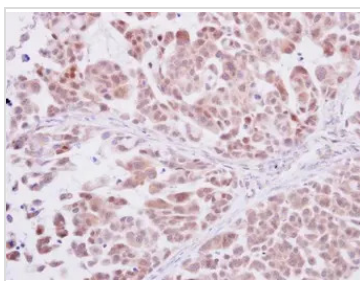
**DATA IMAGES**

**GTx102888 WB Image**

DNA polymerase delta antibody detects POLD1 protein by Western blot analysis.

A. 30 µg Rat2 whole cell lysate/extract

5 % SDS-PAGE

DNA polymerase delta antibody (GTx102888) dilution: 1:1000

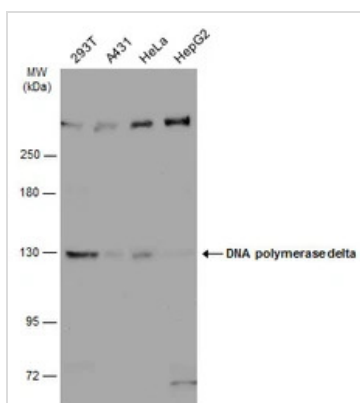

**GTx102888 IHC-P Image**

DNA polymerase delta antibody detects DNA polymerase delta protein at cytoplasm and nucleus on human lung adenocarcinoma by immunohistochemical analysis.

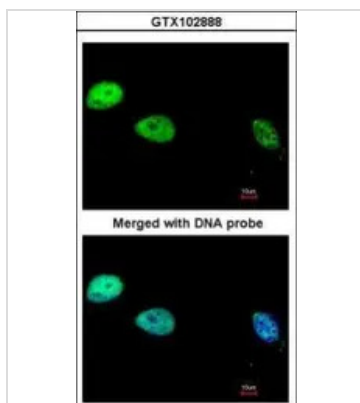
Sample: Paraffin-embedded human lung adenocarcinoma.

DNA polymerase delta antibody (GTx102888) diluted at 1:250.

Antigen Retrieval: Trilogy™ (EDTA based, pH 8.0) buffer, 15min


**GTx102888 WB Image**

Various whole cell extracts (30 µg) were separated by 5% SDS-PAGE, and the membrane was blotted with DNA polymerase delta antibody (GTx102888) diluted at 1:500. The HRP-conjugated anti-rabbit IgG antibody (GTx213110-01) was used to detect the primary antibody.


**GTx102888 ICC/IF Image**

Immunofluorescence analysis of paraformaldehyde-fixed HeLa, using DNA Polymerase delta, catalytic subunit (GTx102888) antibody at 1:200 dilution.



For full product information, images and publications, please visit our [website](https://www.genetex.com).