

## p53 antibody

Cat. No. GTX102965

Host	Rabbit
Clonality	Polyclonal
Isotype	IgG
Applications	WB, ICC/IF, IHC-P, IP, ChIP assay
Reactivity	Human, Zebrafish

References ( 28 )

★★★★☆ Review ( 4 )

Package

100 µl, 25 µl

## Applications

## Application Note

\*Optimal dilutions/concentrations should be determined by the researcher.

Suggested dilution	Recommended dilution
WB	1:500-1:3000
ICC/IF	1:100-1:1000
IHC-P	1:100-1:1000
IP	1:100-1:500
ChIP assay	Assay dependent

Not tested in other applications.

Calculated MW 44 kDa. ( [Note](#) )

## Properties

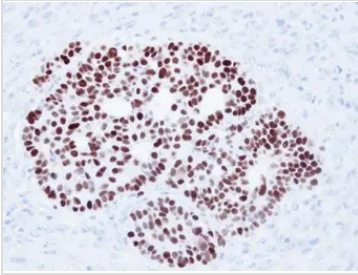
Form	Liquid
Buffer	PBS, 20% Glycerol
Preservative	0.025% ProClin 300
Storage	Store as concentrated solution. Centrifuge briefly prior to opening vial. For short-term storage (1-2 weeks), store at 4°C. For long-term storage, aliquot and store at -20°C or below. Avoid multiple freeze-thaw cycles.
Concentration	1.28 mg/ml (Please refer to the vial label for the specific concentration.)
Immunogen	Recombinant protein encompassing a sequence within the center region of human p53. The exact sequence is proprietary.
Purification	Purified by antigen-affinity chromatography.
Conjugation	Unconjugated

For full product information, images and publications, please visit our [website](#).

For laboratory research use only. Not for any clinical, therapeutic, or diagnostic use in humans or animals. Not for animal or human consumption.

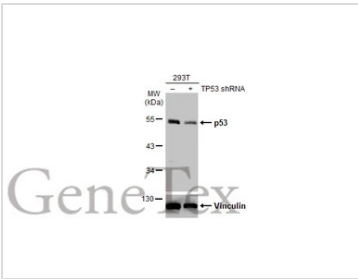
**Note**

Purchasers shall not, and agree not to enable third parties to, analyze, copy, reverse engineer or otherwise attempt to determine the structure or sequence of the product.

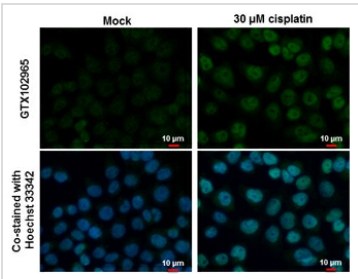
**DATA IMAGES**

**GTX102965 IHC-P Image**

Immunohistochemical analysis of paraffin-embedded Cal27 xenograft, using p53(GTX102965) antibody at 1:500 dilution.

Antigen Retrieval: Trilogy™ (EDTA based, pH 8.0) buffer, 15min


**GTX102965 WB Image**

Non-transfected (–) and transfected (+) 293T whole cell extracts (30 µg) were separated by 10% SDS-PAGE, and the membrane was blotted with p53 antibody (GTX102965) diluted at 1:1000. The HRP-conjugated anti-rabbit IgG antibody (GTX213110-01) was used to detect the primary antibody.


**GTX102965 ICC/IF Image**

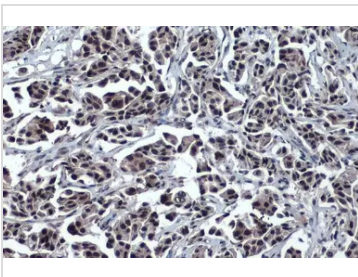
p53 antibody detects p53 protein at nucleus by immunofluorescent analysis.

Samples: HCT 116 cells mock (left) and treated with 30 µM Cisplatin for 24 hrs (right) were fixed in 4% paraformaldehyde at RT for 15 min.

Green: p53 protein stained by p53 antibody (GTX102965) diluted at 1:500.

Blue: Hoechst 33342 staining.

Scale bar = 10 µm.


**GTX102965 IHC-P Image**

p53 antibody detects p53 protein at nucleus by immunohistochemical analysis.

Sample: Paraffin-embedded human breast carcinoma.

p53 stained by p53 antibody (GTX102965) diluted at 1:500.

Antigen Retrieval: Citrate buffer, pH 6.0, 15 min



For full product information, images and publications, please visit our [website](http://www.genetex.com).