

CSE1L antibody

Cat. No. GTX103005

Host	Rabbit
Clonality	Polyclonal
Isotype	IgG
Application	WB, ICC/IF, IHC-P, IP
Reactivity	Human, Mouse, Rat

Reference (3)

Package

100 µl, 25 µl

APPLICATION

Application Note

*Optimal dilutions/concentrations should be determined by the researcher.

Suggested dilution	Recommended dilution
WB	1:1000-1:20000
ICC/IF	1:100-1:2000
IHC-P	1:100-1:1000
IP	Assay dependent

Not tested in other applications.

Calculated MW 110 kDa. ([Note](#))

PROPERTIES

Form	Liquid
Buffer	PBS, 1% BSA, 20% Glycerol
Preservative	0.025% ProClin 300
Storage	Store as concentrated solution. Centrifuge briefly prior to opening vial. For short-term storage (1-2 weeks), store at 4°C. For long-term storage, aliquot and store at -20°C or below. Avoid multiple freeze-thaw cycles.
Concentration	0.4 mg/ml (Please refer to the vial label for the specific concentration.)
Immunogen	Recombinant protein encompassing a sequence within the center region of human CSE1L. The exact sequence is proprietary.
Purification	Purified by antigen-affinity chromatography.
Conjugation	Unconjugated

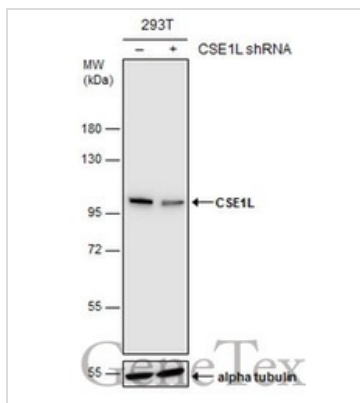


For full product information, images and publications, please visit our [website](#).

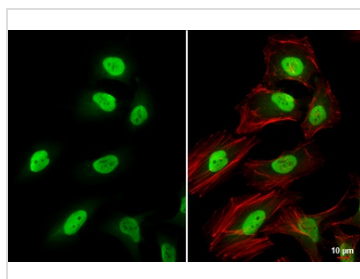
For laboratory research use only. Not for any clinical, therapeutic, or diagnostic use in humans or animals. Not for animal or human consumption.

Note

Purchasers shall not, and agree not to enable third parties to, analyze, copy, reverse engineer or otherwise attempt to determine the structure or sequence of the product.

DATA IMAGES

GTx103005 WB Image

Non-transfected (–) and transfected (+) 293T whole cell extracts (15 µg) were separated by 7.5% SDS-PAGE, and the membrane was blotted with CSE1L antibody (GTx103005) diluted at 1:5000. The HRP-conjugated anti-rabbit IgG antibody (GTx213110-01) was used to detect the primary antibody.


GTx103005 ICC/IF Image

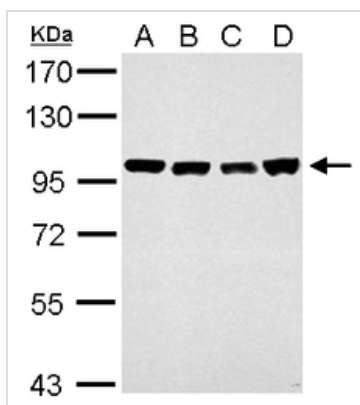
CSE1L antibody detects CSE1L protein at nucleus by immunofluorescent analysis.

Sample: HeLa cells were fixed in 4% paraformaldehyde at RT for 15 min.

Green: CSE1L stained by CSE1L antibody (GTx103005) diluted at 1:1500.

Red: phalloidin, a cytoskeleton marker, diluted at 1:200.

Scale bar= 10 µm.


GTx103005 WB Image

CSE1L antibody detects CSE1L protein by western blot analysis.

A. 30 µg NIH-3T3 whole cell lysate/extract

B. 30 µg JC whole cell lysate/extract

C. 30 µg BCL-1 whole cell lysate/extract

D. 30 µg C2C12 whole cell lysate/extract

7.5% SDS-PAGE

CSE1L antibody (GTx103005) dilution: 1:10000

The HRP-conjugated anti-rabbit IgG antibody (GTx213110-01) was used to detect the primary antibody.



For full product information, images and publications, please visit our [website](https://www.genetex.com).