

Cyclin A2 antibody

Cat. No. GTX103042

Host	Rabbit
Clonality	Polyclonal
Isotype	IgG
Application	WB, ICC/IF, IHC-P, IP
Reactivity	Human, Mouse, Rat, African green monkey

Reference (31)

★★★★★ Review (3)

Package

100 µl, 25 µl

APPLICATION

Application Note

*Optimal dilutions/concentrations should be determined by the researcher.

Suggested dilution	Recommended dilution
WB	1:500-1:3000
ICC/IF	1:100-1:1000
IHC-P	1:100-1:1000
IP	1:100-1:500

Not tested in other applications.

Calculated MW 49 kDa. ([Note](#))

Product Note IP/MS validation was supported by references (PMID:30377384)

PROPERTIES

Form	Liquid
Buffer	PBS, 20% Glycerol
Preservative	0.025% ProClin 300
Storage	Store as concentrated solution. Centrifuge briefly prior to opening vial. For short-term storage (1-2 weeks), store at 4°C. For long-term storage, aliquot and store at -20°C or below. Avoid multiple freeze-thaw cycles.
Concentration	0.73 mg/ml (Please refer to the vial label for the specific concentration.)
Immunogen	Recombinant protein encompassing a sequence within the center region of human Cyclin A2. The exact sequence is proprietary.
Purification	Purified by antigen-affinity chromatography.
Conjugation	Unconjugated



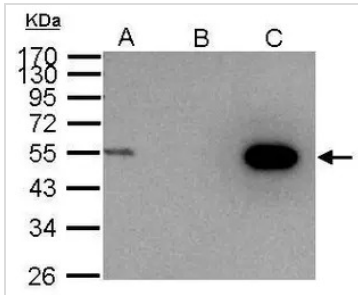
For full product information, images and publications, please visit our [website](#).

Date 2024 / 05 / 06 Page 1 of 2

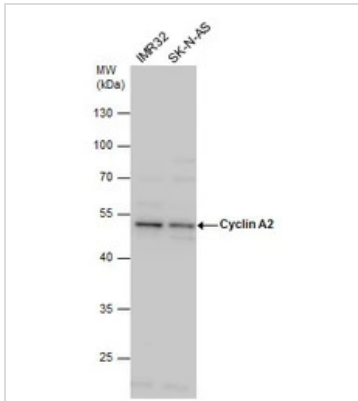
For laboratory research use only. Not for any clinical, therapeutic, or diagnostic use in humans or animals. Not for animal or human consumption.

Note

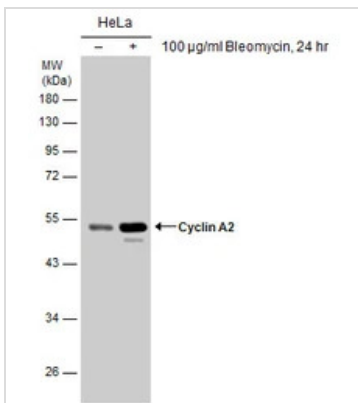
Purchasers shall not, and agree not to enable third parties to, analyze, copy, reverse engineer or otherwise attempt to determine the structure or sequence of the product.

DATA IMAGES

GTx103042 IP Image

Cyclin A2 antibody immunoprecipitates cyclin A2 protein in IP experiments. IP Sample: 1000 µg 293T whole cell lysate/extract A. 30 µg 293T whole cell lysate/extract B. Control with 2.5 µg of preimmune rabbit IgG C. Immunoprecipitation of Cyclin A2 protein by 2.5 µg of Cyclin A2 antibody (GTx103042) 10% SDS-PAGE The immunoprecipitated Cyclin A2 protein was detected by Cyclin A2 antibody (GTx103042) diluted at 1:1000. EasyBlot anti-rabbit IgG (GTx221666-01) was used as a secondary reagent.


GTx103042 WB Image

Cyclin A2 antibody detects Cyclin A2 protein by western blot analysis. Various whole cell extracts (30 µg) were separated by 10% SDS-PAGE, and the membrane was blotted with Cyclin A2 antibody (GTx103042) diluted at a dilution of 1:1000. The HRP-conjugated anti-rabbit IgG antibody (GTx213110-01) was used to detect the primary antibody.


GTx103042 WB Image

Untreated (-) and treated (+) HeLa whole cell extracts (30 µg) were separated by 10% SDS-PAGE, and the membrane was blotted with Cyclin A2 antibody (GTx103042) diluted at 1:1000. The HRP-conjugated anti-rabbit IgG antibody (GTx213110-01) was used to detect the primary antibody.



For full product information, images and publications, please visit our [website](https://www.genetex.com).