

Mu Opioid receptor splice variant antibody

Cat. No. GTX10306

Host	Rabbit
Clonality	Polyclonal
Isotype	IgG
Application	ICC/IF, IHC
Reactivity	Mouse, Rat

Package

50 µl

APPLICATION

Application Note

*Optimal dilutions/concentrations should be determined by the researcher.

Suggested dilution	Recommended dilution
ICC/IF	Assay dependent
IHC	1:5000-1:10000

Not tested in other applications.

Calculated MW 45 kDa. ([Note](#))

PROPERTIES

Form	Liquid
Buffer	Serum
Preservative	0.05% Sodium azide
Storage	Store as concentrated solution. Centrifuge briefly prior to opening vial. For short-term storage (1-2 weeks), store at 4°C. For long-term storage, aliquot and store at -20°C or below. Avoid multiple freeze-thaw cycles.
Immunogen	KSCMDRGMRNLLPDDGPRQE
Purification	Unpurified
Conjugation	Unconjugated

Note

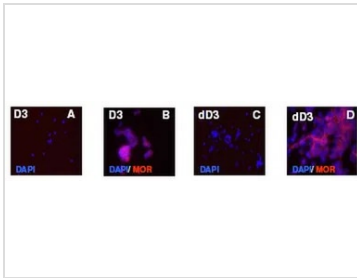
For laboratory research use only. Not for any clinical, therapeutic, or diagnostic use in humans or animals. Not for animal or human consumption.

Purchasers shall not, and agree not to enable third parties to, analyze, copy, reverse engineer or otherwise attempt to determine the structure or sequence of the product.



For full product information, images and publications, please visit our [website](#).

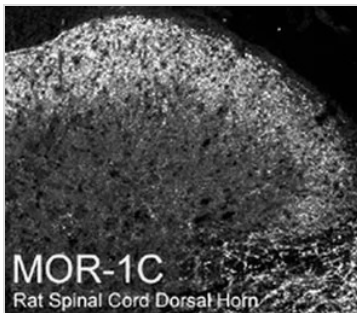
DATA IMAGES



GTX10306 ICC/IF Image

ICC/IF analysis of ES cells using GTX10306 Mu Opioid receptor splice variant antibody. D3 ES cells were maintained in serum/LIF/ME induced self-renewal conditions (undifferentiated cells, D3). Upon treatment with 1 μ M RA they undergo differentiation (dD3).

Dilution : 1:2500



GTX10306 IHC Image

IHC analysis of rat spinal cord using GTX10306 Mu Opioid receptor splice variant antibody.



For full product information, images and publications, please visit our [website](#).