

# MCM2 antibody [N1N2], N-term

**Cat. No. GTX103071**

<b>Host</b>	Rabbit
<b>Clonality</b>	Polyclonal
<b>Isotype</b>	IgG
<b>Applications</b>	WB, ICC/IF, IP
<b>Reactivity</b>	Human

[References \( 2 \)](#)

**Package**

100 µl, 25 µl

## Applications

### Application Note

\*Optimal dilutions/concentrations should be determined by the researcher.

Suggested dilution	Recommended dilution
WB	1:500-1:3000
ICC/IF	1:100-1:1000
IP	1:100-1:500

Not tested in other applications.

**Calculated MW** 102 kDa. ([Note](#))

**Product Note** IP/MS validation is based on published data (PMID: 30377385).

## Properties

<b>Form</b>	Liquid
<b>Buffer</b>	PBS, 1% BSA, 20% Glycerol
<b>Preservative</b>	0.01% Thimerosal
<b>Storage</b>	Store as concentrated solution. Centrifuge briefly prior to opening vial. For short-term storage (1-2 weeks), store at 4°C. For long-term storage, aliquot and store at -20°C or below. Avoid multiple freeze-thaw cycles.
<b>Concentration</b>	1 mg/ml (Please refer to the vial label for the specific concentration.)
<b>Immunogen</b>	Recombinant protein encompassing a sequence within the N-terminus region of human MCM2. The exact sequence is proprietary.
<b>Purification</b>	Purified by antigen-affinity chromatography.
<b>Conjugation</b>	Unconjugated



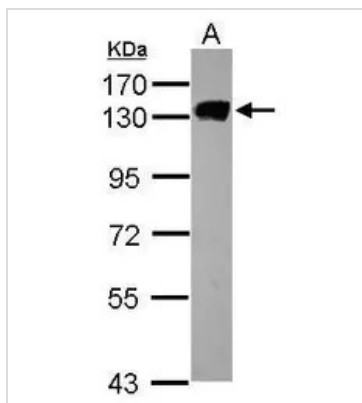
For full product information, images and publications, please visit our [website](#).

For laboratory research use only. Not for any clinical, therapeutic, or diagnostic use in humans or animals. Not for animal or human consumption.

## Note

Purchasers shall not, and agree not to enable third parties to, analyze, copy, reverse engineer or otherwise attempt to determine the structure or sequence of the product.

## DATA IMAGES



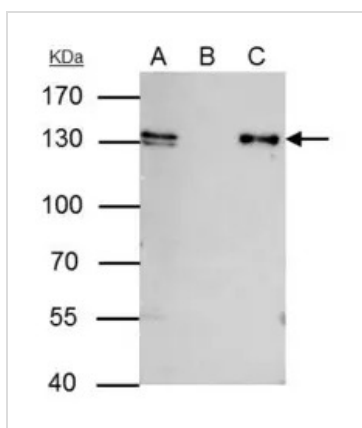
### GTX103071 WB Image

Sample (30 ug of whole cell lysate)

A: HCT116

7.5% SDS PAGE

GTX103071 diluted at 1:1000



### GTX103071 IP Image

MCM2 antibody [N1N2], N-term immunoprecipitates MCM2 protein in IP experiments.

IP samples: HCT-116 whole cell extract

A. 40 µg HCT-116 whole cell extract

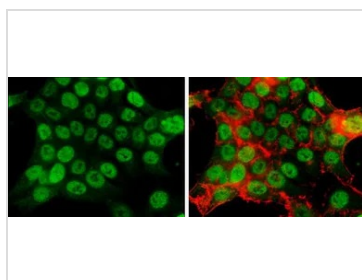
B. Control with 4 µg of preimmune Rabbit IgG

C. Immunoprecipitation of MCM2 protein by 4 µg MCM2 antibody [N1N2], N-term (GTX103071)

7.5 % SDS-PAGE

The immunoprecipitated MCM2 protein was detected by MCM2 antibody [N1N2], N-term (GTX103071) diluted at 1:500.

[EasyBlot anti-rabbit IgG (GTX221666-01) was used as a secondary reagent]



### GTX103071 ICC/IF Image

MCM2 antibody [N1N2], N-term detects MCM2 protein at nucleus by immunofluorescent analysis.

Sample: HCT116 cells were fixed in 4% paraformaldehyde at RT for 15 min.

Green: MCM2 protein stained by MCM2 antibody [N1N2], N-term (GTX103071) diluted at 1:500.

Red: phalloidin, a cytoskeleton marker, diluted at 1:50.



For full product information, images and publications, please visit our [website](https://www.genetex.com).