

## LAMP2 antibody

Cat. No. GTX103214

Host	Rabbit
Clonality	Polyclonal
Isotype	IgG
Application	WB, ICC/IF, IHC-P
Reactivity	Human

Reference ( 9 )

★★★★☆ Review ( 2 )

Package

100 µl, 25 µl

## PRODUCT

## Summary

LAMP2 antibody detects lysosome-associated membrane protein 2 (LAMP-2, or CD107b), a transmembrane glycoprotein that generally migrates at ~120 kDa on western blot. LAMP-2 has a similar distribution to LAMP-1 in endolysosomal and autophagic organelles. Moreover, like LAMP-1, LAMP-2 has been used to study lysosome biology.

## APPLICATION

## Application Note

\*Optimal dilutions/concentrations should be determined by the researcher.

Suggested dilution	Recommended dilution
WB	1:500-1:3000
ICC/IF	1:100-1:1000
IHC-P	1:100-1:1000

Not tested in other applications.

**Calculated MW** 45 kDa. ( [Note](#) )

## PROPERTIES

Form	Liquid
Buffer	PBS, 1% BSA, 20% Glycerol
Preservative	0.025% ProClin 300
Storage	Store as concentrated solution. Centrifuge briefly prior to opening vial. For short-term storage (1-2 weeks), store at 4°C. For long-term storage, aliquot and store at -20°C or below. Avoid multiple freeze-thaw cycles.
Concentration	0.42 mg/ml (Please refer to the vial label for the specific concentration.)
Immunogen	Recombinant protein encompassing a sequence within the center region of human LAMP2. The exact sequence is proprietary.
Purification	Purified by antigen-affinity chromatography.
Conjugation	Unconjugated



For full product information, images and publications, please visit our [website](#).

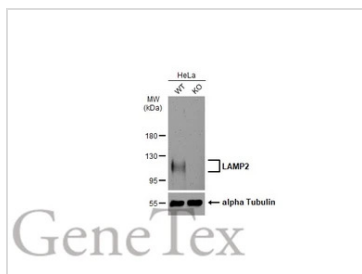
Date 2024 / 05 / 06 Page 1 of 2

For laboratory research use only. Not for any clinical, therapeutic, or diagnostic use in humans or animals. Not for animal or human consumption.

## Note

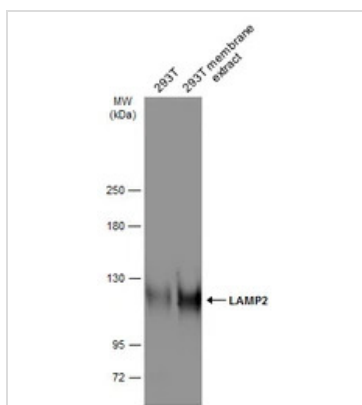
Purchasers shall not, and agree not to enable third parties to, analyze, copy, reverse engineer or otherwise attempt to determine the structure or sequence of the product.

## DATA IMAGES



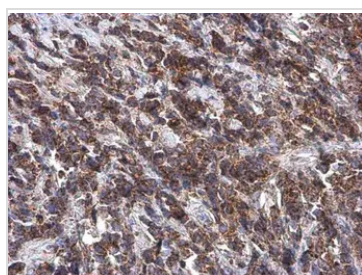
### GTX103214 WB Image

Wild-type (WT) and LAMP2 knockout (KO) HeLa cell extracts (30 µg) were separated by 7.5% SDS-PAGE, and the membrane was blotted with LAMP2 antibody (GTX103214) diluted at 1:5000. The HRP-conjugated anti-rabbit IgG antibody (GTX213110-01) was used to detect the primary antibody, and the signal was developed with Trident ECL plus-Enhanced.



### GTX103214 WB Image

293T whole cell and membrane extracts (30 µg) were separated by 5% SDS-PAGE, and the membrane was blotted with LAMP2 antibody (GTX103214) diluted at 1:2000. The HRP-conjugated anti-rabbit IgG antibody (GTX213110-01) was used to detect the primary antibody.



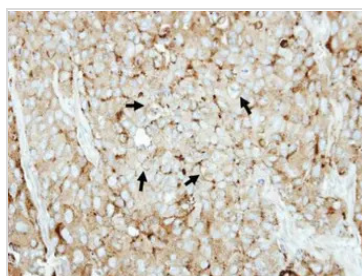
### GTX103214 IHC-P Image

LAMP2 antibody detects LAMP2 protein at cytoplasm by immunohistochemical analysis.

Sample: Paraffin-embedded human breast carcinoma.

LAMP2 stained by LAMP2 antibody (GTX103214) diluted at 1:1000.

Antigen Retrieval: Tris-EDTA buffer, pH 9.0, 15 min



### GTX103214 IHC-P Image

Immunohistochemical analysis of paraffin-embedded BT474 xenograft, using LAMP2(GTX103214) antibody at 1:500 dilution.

Antigen Retrieval: Trilogy™ (EDTA based, pH 8.0) buffer, 15min



For full product information, images and publications, please visit our [website](https://www.genetex.com).