

alpha Actinin 3 antibody

Cat. No. GTX103216

| | |
|---------------------|------------------------------|
| Host | Rabbit |
| Clonality | Polyclonal |
| Isotype | IgG |
| Applications | WB, IP |
| Reactivity | Human, Mouse, Rat, Zebrafish |

References (1)

Package

100 µl, 25 µl

Applications

Application Note

*Optimal dilutions/concentrations should be determined by the researcher.

| Suggested dilution | Recommended dilution |
|--------------------|----------------------|
| WB | 1:5000-1:20000 |
| IP | 1:100-1:500 |

Not tested in other applications.

Calculated MW 103 kDa. ([Note](#))

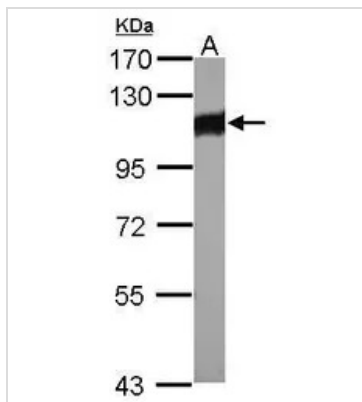
Properties

| | |
|----------------------|--------------------------------------------------------------------------------------------------------------------------------------------------------------------------------------------------------------------------------------------------------------------------------------------------------------------------------------|
| Form | Liquid |
| Buffer | PBS, 1% BSA, 20% Glycerol |
| Preservative | 0.01% Thimerosal |
| Storage | Store as concentrated solution. Centrifuge briefly prior to opening vial. For short-term storage (1-2 weeks), store at 4°C. For long-term storage, aliquot and store at -20°C or below. Avoid multiple freeze-thaw cycles. |
| Concentration | 1 mg/ml (Please refer to the vial label for the specific concentration.) |
| Immunogen | Recombinant protein encompassing a sequence within the center region of human alpha Actinin 3. The exact sequence is proprietary. |
| Purification | Purified by antigen-affinity chromatography. |
| Conjugation | Unconjugated |
| Note | For laboratory research use only. Not for any clinical, therapeutic, or diagnostic use in humans or animals. Not for animal or human consumption. Purchasers shall not, and agree not to enable third parties to, analyze, copy, reverse engineer or otherwise attempt to determine the structure or sequence of the product. |



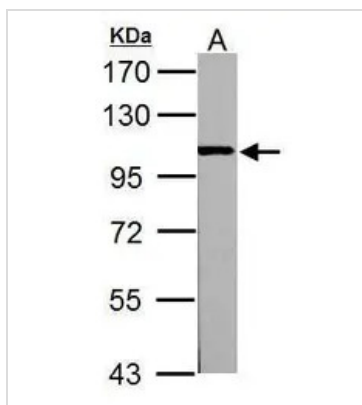
For full product information, images and publications, please visit our [website](#).

DATA IMAGES



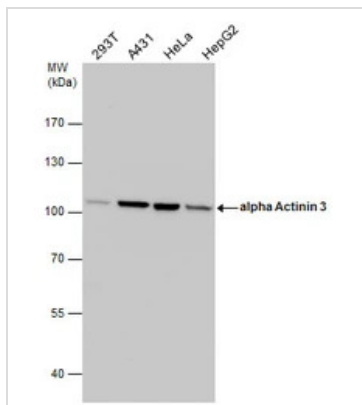
GTX103216 WB Image

Sample (30 µg of whole cell lysate)
 A: whole zebrafish
 7.5% SDS PAGE
 GTX103216 diluted at 1:1000



GTX103216 WB Image

Sample (30 ug of whole cell lysate)
 A: PC-12
 7.5% SDS PAGE
 GTX103216 diluted at 1:10000



GTX103216 WB Image

alpha Actinin 3 antibody detects alpha Actinin 3 protein by western blot analysis. Various whole cell extracts (30 µg) were separated by 7.5% SDS-PAGE, and the membrane was blotted with alpha Actinin 3 antibody (GTX103216) diluted by 1:10000.



For full product information, images and publications, please visit our [website](#).