

alpha Actinin 2 antibody [N1N3]

Cat. No. GTX103219

Host	Rabbit
Clonality	Polyclonal
Isotype	IgG
Applications	WB, ICC/IF, IHC-P, IHC
Reactivity	Human, Mouse, Rat, Zebrafish, Pig

References (16)

★★★★★ Review (1)

Package

100 µl, 25 µl

Applications

Application Note

*Optimal dilutions/concentrations should be determined by the researcher.

Suggested dilution	Recommended dilution
WB	1:500-1:10000
ICC/IF	1:100-1:1000
IHC-P	1:100-1:1000
IHC	Assay dependent

Not tested in other applications.

Calculated MW 104 kDa. ([Note](#))**Product Note** Based on sequence homology, this antibody may cross-react with other Actinin family members.

Properties

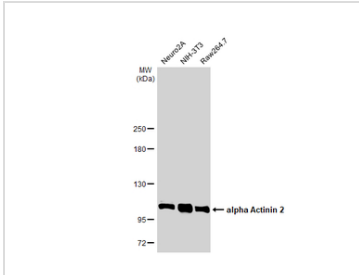
Form	Liquid
Buffer	PBS, 1% BSA, 20% Glycerol
Preservative	0.025% ProClin 300
Storage	Store as concentrated solution. Centrifuge briefly prior to opening vial. For short-term storage (1-2 weeks), store at 4°C. For long-term storage, aliquot and store at -20°C or below. Avoid multiple freeze-thaw cycles.
Concentration	0.18 mg/ml (Please refer to the vial label for the specific concentration.)
Immunogen	Recombinant protein encompassing a sequence within the center region of human alpha Actinin 2. The exact sequence is proprietary.
Purification	Purified by antigen-affinity chromatography.
Conjugation	Unconjugated

For full product information, images and publications, please visit our [website](#).

For laboratory research use only. Not for any clinical, therapeutic, or diagnostic use in humans or animals. Not for animal or human consumption.

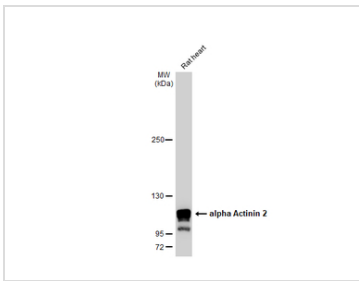
Note
 Purchasers shall not, and agree not to enable third parties to, analyze, copy, reverse engineer or otherwise attempt to determine the structure or sequence of the product.

DATA IMAGES



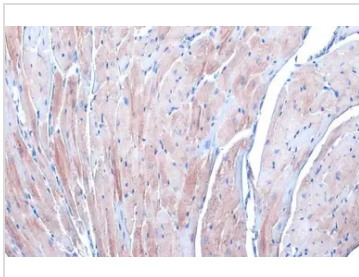
GTX103219 WB Image

Various whole cell extracts (30 µg) were separated by 5% SDS-PAGE, and the membrane was blotted with alpha Actinin 2 antibody [N1N3] (GTX103219) diluted at 1:1000. The HRP-conjugated anti-rabbit IgG antibody (GTX213110-01) was used to detect the primary antibody.



GTX103219 WB Image

Rat tissue extract (50 µg) was separated by 5% SDS-PAGE, and the membrane was blotted with alpha Actinin 2 antibody [N1N3] (GTX103219) diluted at 1:20000. The HRP-conjugated anti-rabbit IgG antibody (GTX213110-01) was used to detect the primary antibody.



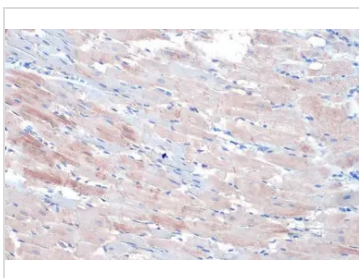
GTX103219 IHC-P Image

alpha Actinin 2 antibody [N1N3] detects alpha Actinin 2 protein at cytoplasm by immunohistochemical analysis.

Sample: Paraffin-embedded mouse heart.

alpha Actinin 2 stained by alpha Actinin 2 antibody [N1N3] (GTX103219) diluted at 1:500.

Antigen Retrieval: Citrate buffer, pH 6.0, 15 min



GTX103219 IHC-P Image

alpha Actinin 2 antibody [N1N3] detects alpha Actinin 2 protein at cytoplasm by immunohistochemical analysis.

Sample: Paraffin-embedded rat heart.

alpha Actinin 2 stained by alpha Actinin 2 antibody [N1N3] (GTX103219) diluted at 1:500.

Antigen Retrieval: Citrate buffer, pH 6.0, 15 min



For full product information, images and publications, please visit our [website](#).