

## NBS1 antibody

Cat. No. GTX103229

Host	Rabbit
Clonality	Polyclonal
Isotype	IgG
Application	WB, ICC/IF, IP
Reactivity	Human

Reference ( 2 )

Package

100 µl, 25 µl

## APPLICATION

## Application Note

\*Optimal dilutions/concentrations should be determined by the researcher.

Suggested dilution	Recommended dilution
WB	1:500-1:10000
ICC/IF	1:100-1:1000
IP	1:100-1:500

Not tested in other applications.

Calculated MW 85 kDa. ( [Note](#) )

## PROPERTIES

Form	Liquid
Buffer	PBS, 20% Glycerol
Preservative	0.01% Thimerosal
Storage	Store as concentrated solution. Centrifuge briefly prior to opening vial. For short-term storage (1-2 weeks), store at 4°C. For long-term storage, aliquot and store at -20°C or below. Avoid multiple freeze-thaw cycles.
Concentration	1 mg/ml (Please refer to the vial label for the specific concentration.)
Immunogen	Recombinant protein encompassing a sequence within the center region of human NBS1. The exact sequence is proprietary.
Purification	Purified by antigen-affinity chromatography.
Conjugation	Unconjugated

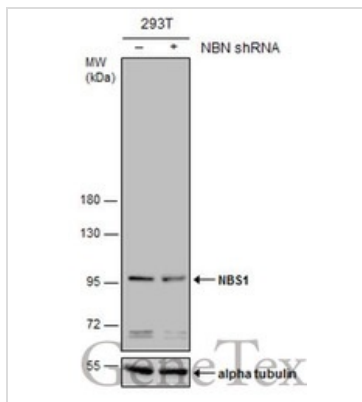
## Note

For laboratory research use only. Not for any clinical, therapeutic, or diagnostic use in humans or animals. Not for animal or human consumption.

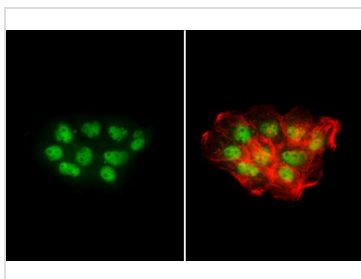
Purchasers shall not, and agree not to enable third parties to, analyze, copy, reverse engineer or otherwise attempt to determine the structure or sequence of the product.



For full product information, images and publications, please visit our [website](#).

**DATA IMAGES**

**GTx103229 WB Image**

Non-transfected (–) and transfected (+) 293T whole cell extracts (30 µg) were separated by 7.5% SDS-PAGE, and the membrane was blotted with NBS1 antibody (GTx103229) diluted at 1:2000.

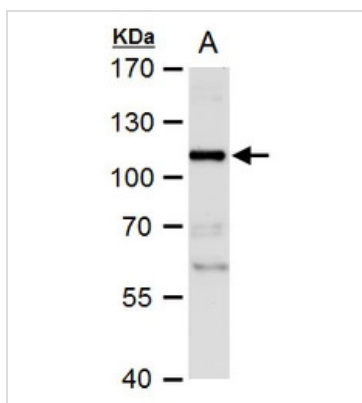

**GTx103229 ICC/IF Image**

NBS1 antibody detects NBS1 protein at nucleus by immunofluorescent analysis.

Sample: A431 cells were fixed in 4% paraformaldehyde at RT for 15 min.

Green: NBS1 stained by NBS1 antibody (GTx103229) diluted at 1:500.

Red: phalloidin, a cytoskeleton marker, diluted at 1:200.

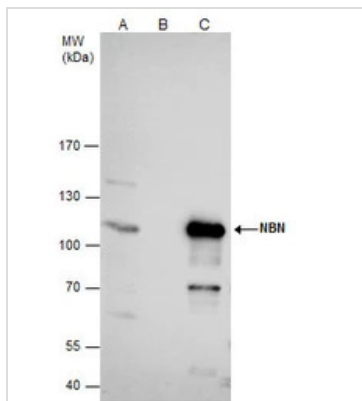

**GTx103229 WB Image**

NBS1 antibody detects NBS1 protein by western blot analysis.

A. 30 µg NT2D1 whole cell extract

7.5 % SDS-PAGE

NBS1 antibody (GTx103229) dilution: 1:5000


**GTx103229 IP Image**

NBS1 antibody immunoprecipitates NBN protein in IP experiments.

IP samples: NT2D1 whole cell extract

A. 50 µg NT2D1 whole cell extract

B. Control with 4 µg of preimmune Rabbit IgG

C. Immunoprecipitation of NBN protein by 4 µg NBS1 antibody (GTx103229)

7.5 % SDS-PAGE

The immunoprecipitated NBN protein was detected by NBS1 antibody (GTx103229) diluted at 1:500.

[EasyBlot anti-rabbit IgG (GTx221666-01) was used as a secondary reagent]



For full product information, images and publications, please visit our [website](https://www.genetex.com).