

BIN1 antibody

Cat. No. GTX103259

Host	Rabbit
Clonality	Polyclonal
Isotype	IgG
Application	WB, ICC/IF, IHC-P, IHC
Reactivity	Human, Mouse

Reference (3)
 Package
 100 µl, 25 µl

APPLICATION

Application Note

*Optimal dilutions/concentrations should be determined by the researcher.

Suggested dilution	Recommended dilution
WB	1:500-1:3000
ICC/IF	1:100-1:1000
IHC-P	1:100-1:1000
IHC	Assay dependent

Not tested in other applications.

Calculated MW 65 kDa. ([Note](#))

PROPERTIES

Form	Liquid
Buffer	PBS, 20% Glycerol
Preservative	0.025% ProClin 300
Storage	Store as concentrated solution. Centrifuge briefly prior to opening vial. For short-term storage (1-2 weeks), store at 4°C. For long-term storage, aliquot and store at -20°C or below. Avoid multiple freeze-thaw cycles.
Concentration	1.34 mg/ml (Please refer to the vial label for the specific concentration.)
Immunogen	Recombinant protein encompassing a sequence within the center region of human BIN1. The exact sequence is proprietary.
Purification	Purified by antigen-affinity chromatography.
Conjugation	Unconjugated

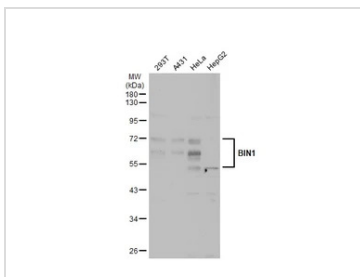
Note

For laboratory research use only. Not for any clinical, therapeutic, or diagnostic use in humans or animals. Not for animal or human consumption.

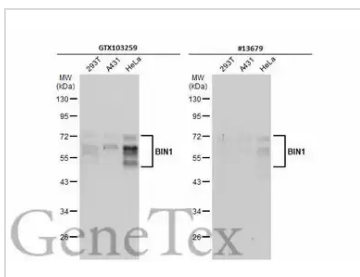
Purchasers shall not, and agree not to enable third parties to, analyze, copy, reverse engineer or otherwise attempt to determine the structure or sequence of the product.



For full product information, images and publications, please visit our [website](#).

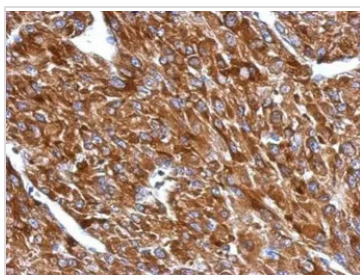
DATA IMAGES

GTX103259 WB Image

Various whole cell extracts (30 µg) were separated by 10% SDS-PAGE, and the membrane was blotted with BIN1 antibody (GTX103259) diluted at 1:1000. The HRP-conjugated anti-rabbit IgG antibody (GTX213110-01) was used to detect the primary antibody.


GTX103259 WB Image

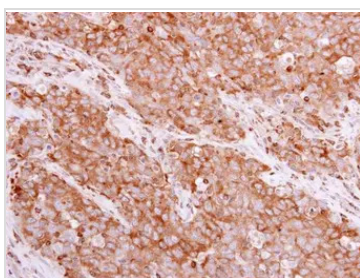
Various whole cell extracts (30 µg) were separated by 10% SDS-PAGE, and the membranes were blotted with BIN1 antibody (GTX103259) diluted at 1:1000 and competitor's antibody (#13679) diluted at 1:500. The HRP-conjugated anti-rabbit IgG antibody (GTX213110-01) was used to detect the primary antibody.

*The competitor is not affiliated with GeneTex and does not endorse this product.


GTX103259 IHC-P Image

Immunohistochemical analysis of paraffin-embedded U87 xenograft, using BIN1 (GTX103259) antibody at 1:500 dilution.

Antigen Retrieval: Trilogy™ (EDTA based, pH 8.0) buffer, 15min

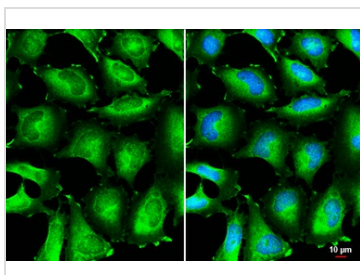

GTX103259 IHC-P Image

BIN1 antibody detects BIN1 protein at cytoplasm in human papillary adenocarcinoma by immunohistochemical analysis.

Sample: Paraffin-embedded human papillary adenocarcinoma .

BIN1 antibody (GTX103259) diluted at 1:500.

Antigen Retrieval: Trilogy™ (EDTA based, pH 8.0) buffer, 15min


GTX103259 ICC/IF Image

BIN1 antibody detects BIN1 protein at cytoplasm by immunofluorescent analysis.

Sample: HeLa cells were fixed in 4% paraformaldehyde at RT for 15 min.

Green: BIN1 stained by BIN1 antibody (GTX103259) diluted at 1:500.

Blue: Fluoroshield with DAPI (GTX30920).

Scale bar= 10 µm.



For full product information, images and publications, please visit our [website](https://www.genetex.com).