

## Calretinin antibody

Cat. No. GTX103261

Host	Rabbit
Clonality	Polyclonal
Isotype	IgG
Application	WB, ICC/IF, IHC-P, IHC-Fr
Reactivity	Human, Mouse, Rat

Reference ( 5 )

★★★★☆ Review ( 1 )

Package

100 µl, 25 µl

## APPLICATION

## Application Note

\*Optimal dilutions/concentrations should be determined by the researcher.

Suggested dilution	Recommended dilution
WB	1:500-1:10000
ICC/IF	1:100-1:1000
IHC-P	1:100-1:1000
IHC-Fr	1:100-1:1000

Not tested in other applications.

Calculated MW 32 kDa. ( [Note](#) )

## PROPERTIES

Form	Liquid
Buffer	PBS, 20% Glycerol
Preservative	0.025% ProClin 300
Storage	Store as concentrated solution. Centrifuge briefly prior to opening vial. For short-term storage (1-2 weeks), store at 4°C. For long-term storage, aliquot and store at -20°C or below. Avoid multiple freeze-thaw cycles.
Concentration	1.08 mg/ml (Please refer to the vial label for the specific concentration.)
Immunogen	Recombinant protein encompassing a sequence within the center region of human Calretinin. The exact sequence is proprietary.
Purification	Purified by antigen-affinity chromatography.
Conjugation	Unconjugated

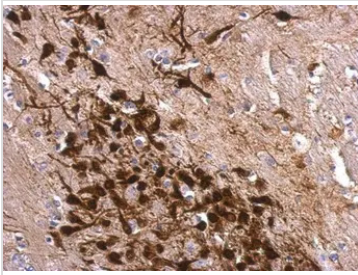


For full product information, images and publications, please visit our [website](#).

For laboratory research use only. Not for any clinical, therapeutic, or diagnostic use in humans or animals. Not for animal or human consumption.

**Note**

Purchasers shall not, and agree not to enable third parties to, analyze, copy, reverse engineer or otherwise attempt to determine the structure or sequence of the product.

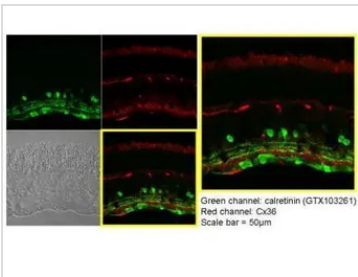
**DATA IMAGES**

**GTx103261 IHC-P Image**

Calretinin antibody detects Calretinin protein at cytosol on mouse fore brain by immunohistochemical analysis.

Sample: Paraffin-embedded mouse fore brain.

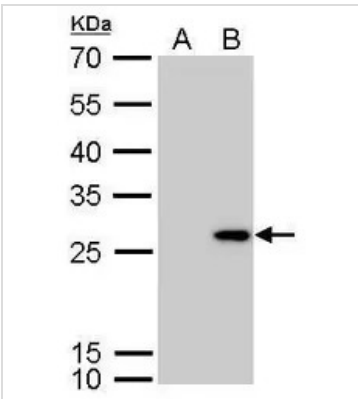
Calretinin antibody (GTx103261) dilution: 1:500.

Antigen Retrieval: Trilogy™ (EDTA based, pH 8.0) buffer, 15min


**GTx103261 IHC-P Image**

Immunohistochemical analysis of paraffin-embedded Mouse retina, using Calretinin(GTx103261) antibody at 1:250 dilution.

Antigen Retrieval: Trilogy™ (EDTA based, pH 8.0) buffer, 15min


**GTx103261 WB Image**

Calretinin antibody detects CALB2 protein by western blot analysis.

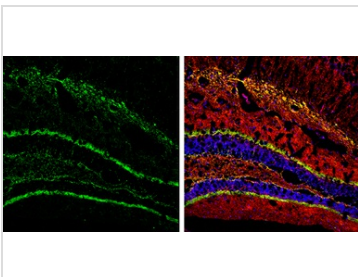
A. 30 µg 293T whole cell lysate/extract

B. 30 µg whole cell lysate/extract of human CALB2-transfected 293T cells

12% SDS-PAGE

Calretinin antibody (GTx103261) dilution: 1:5000

The HRP-conjugated anti-rabbit IgG antibody (GTx213110-01) was used to detect the primary antibody.


**GTx103261 IHC-Fr Image**

Calretinin antibody detects Calretinin protein by immunohistochemical analysis.

Samples: Frozen Section adult mouse hippocampus.

Green: Calretinin protein stained by Calretinin antibody (GTx103261) diluted at 1:250.

Red: NF-H, stained by NF-H antibody [GT114] (GTx634289) diluted at 1:500.

Blue: Fluoroshield with DAPI (GTx30920).



For full product information, images and publications, please visit our [website](https://www.genetex.com).