

## Homer1 antibody

**Cat. No. GTX103278**

<b>Host</b>	Rabbit
<b>Clonality</b>	Polyclonal
<b>Isotype</b>	IgG
<b>Applications</b>	WB, ICC/IF, IHC-P, IHC-Fr, IP
<b>Reactivity</b>	Human, Mouse, Rat

References ( 14 )

Package

100 µl, 25 µl

## Applications

**Application Note**

\*Optimal dilutions/concentrations should be determined by the researcher.

Suggested dilution	Recommended dilution
WB	1:500-1:10000
ICC/IF	1:100-1:1000
IHC-P	1:100-1:1000
IHC-Fr	1:100-1:1000
IP	1:100-1:500

Not tested in other applications.

**Calculated MW** 40 kDa. ( [Note](#) )

## Properties

<b>Form</b>	Liquid
<b>Buffer</b>	PBS, 20% Glycerol
<b>Preservative</b>	0.025% ProClin 300
<b>Storage</b>	Store as concentrated solution. Centrifuge briefly prior to opening vial. For short-term storage (1-2 weeks), store at 4°C. For long-term storage, aliquot and store at -20°C or below. Avoid multiple freeze-thaw cycles.
<b>Concentration</b>	1.12 mg/ml (Please refer to the vial label for the specific concentration.)
<b>Immunogen</b>	Recombinant protein encompassing a sequence within the center region of human Homer1. The exact sequence is proprietary.
<b>Purification</b>	Purified by antigen-affinity chromatography.
<b>Conjugation</b>	Unconjugated



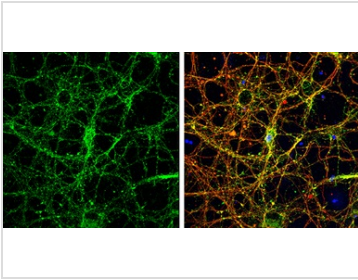
For full product information, images and publications, please visit our [website](#).

For laboratory research use only. Not for any clinical, therapeutic, or diagnostic use in humans or animals. Not for animal or human consumption.

#### Note

Purchasers shall not, and agree not to enable third parties to, analyze, copy, reverse engineer or otherwise attempt to determine the structure or sequence of the product.

#### DATA IMAGES



#### GTX103278 ICC/IF Image

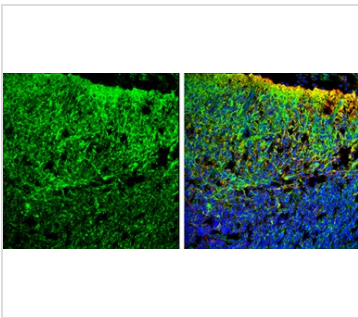
Homer1 antibody detects Homer1 protein by immunofluorescent analysis.

Sample: DIV9 rat E18 primary cortical neurons were fixed in 4% paraformaldehyde at RT for 15 min.

Green: Homer1 protein stained by Homer1 antibody (GTX103278) diluted at 1:500.

Red: beta Tubulin 3/ Tuj1, stained by beta Tubulin 3/ Tuj1 antibody [GT886] (GTX631830) diluted at 1:500.

Blue: Fluoroshield with DAPI (GTX30920).



#### GTX103278 IHC-Fr Image

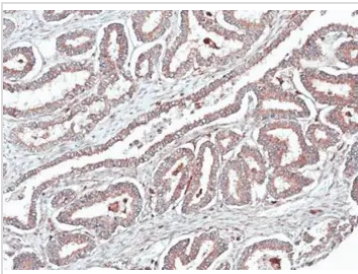
Homer antibody detects Homer protein expression by immunohistochemical analysis.

Sample: Frozen sectioned E13.5 Rat brain.

Green: Homer protein stained by Homer antibody (GTX103278) diluted at 1:250.

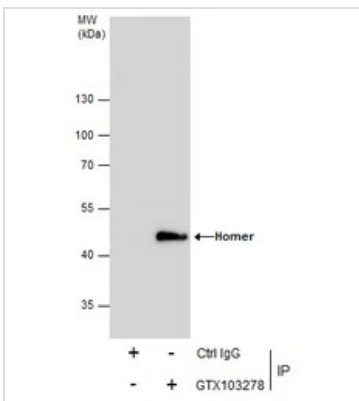
Red: beta Tubulin 3/ TUJ1, a mature neuron marker, stained by beta Tubulin 3/ TUJ1 antibody [GT11710] (GTX631836) diluted at 1:500.

Blue: Fluoroshield with DAPI (GTX30920).



#### GTX103278 IHC-P Image

Immunohistochemical analysis of paraffin-embedded human ovarian cancer, using HOMER1(GTX103278) antibody at 1:100 dilution.



#### GTX103278 IP Image

Immunoprecipitation of Homer protein from IMR32 whole cell extracts using 5 µg of Homer antibody (GTX103278).

Western blot analysis was performed using Homer antibody (GTX103278).

EasyBlot anti-Rabbit IgG (GTX221666-01) was used as a secondary reagent.



For full product information, images and publications, please visit our [website](#).