

## MMP10 antibody

Cat. No. GTX103287

Host	Rabbit
Clonality	Polyclonal
Isotype	IgG
Applications	WB, IHC-P
Reactivity	Human

References ( 1 )

Package

100 µl, 25 µl

## Applications

## Application Note

\*Optimal dilutions/concentrations should be determined by the researcher.

Suggested dilution	Recommended dilution
WB	1:500-1:3000
IHC-P	1:100-1:1000

Not tested in other applications.

Calculated MW 54 kDa. ( [Note](#) )

## Properties

Form	Liquid
Buffer	PBS, 1% BSA, 20% Glycerol
Preservative	0.01% Thimerosal
Storage	Store as concentrated solution. Centrifuge briefly prior to opening vial. For short-term storage (1-2 weeks), store at 4°C. For long-term storage, aliquot and store at -20°C or below. Avoid multiple freeze-thaw cycles.
Concentration	0.48 mg/ml (Please refer to the vial label for the specific concentration.)
Immunogen	Recombinant protein encompassing a sequence within the center region of human MMP10. The exact sequence is proprietary.
Purification	Purified by antigen-affinity chromatography.
Conjugation	Unconjugated

## Note

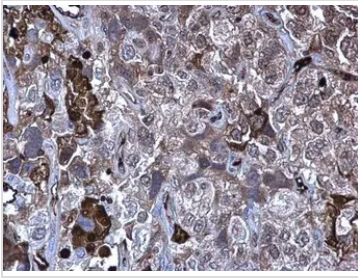
For laboratory research use only. Not for any clinical, therapeutic, or diagnostic use in humans or animals. Not for animal or human consumption.

Purchasers shall not, and agree not to enable third parties to, analyze, copy, reverse engineer or otherwise attempt to determine the structure or sequence of the product.



For full product information, images and publications, please visit our [website](#).

## DATA IMAGES



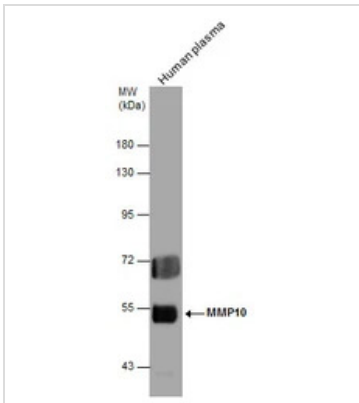
### GTx103287 IHC-P Image

MMP10 antibody detects MMP10 protein at secreted on human cervical carcinoma by immunohistochemical analysis.

Sample: Paraffin-embedded human cervical carcinoma.

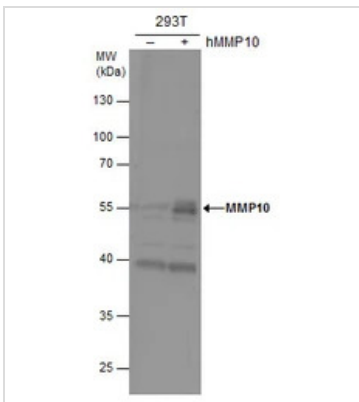
MMP10 antibody (GTx103287) diluted at 1:500.

Antigen Retrieval: Trilogy™ (EDTA based, pH 8.0) buffer, 15min



### GTx103287 WB Image

MMP10 antibody detects MMP10 protein by western blot analysis. Human tissue extracts (30 µg) was separated by 7.5% SDS-PAGE, and the membrane was blotted with MMP10 antibody (GTx103287) diluted at 1:2000.



### GTx103287 WB Image

MMP10 antibody detects MMP10 protein by western blot analysis. Non-transfected (-) and MMP10-transfected (+) whole cell extracts (30 µg) were separated by 10% SDS-PAGE, and the membrane was blotted with MMP10 antibody (GTx103287) diluted at 1:1000.



For full product information, images and publications, please visit our [website](https://www.genetex.com).