

KLF5 antibody

Cat. No. GTX103289

| | |
|---------------------|-------------------------------|
| Host | Rabbit |
| Clonality | Polyclonal |
| Isotype | IgG |
| Applications | WB, ICC/IF, IHC-P, IHC-Fr, IP |
| Reactivity | Human, Mouse, Rat |

References (24)





 Review (1)

Package

100 µl, 25 µl

Applications

Application Note

*Optimal dilutions/concentrations should be determined by the researcher.

| Suggested dilution | Recommended dilution |
|--------------------|----------------------|
| WB | 1:500-1:3000 |
| ICC/IF | 1:100-1:1000 |
| IHC-P | 1:100-1:1000 |
| IHC-Fr | Assay dependent |
| IP | Assay dependent |

Not tested in other applications.

Calculated MW 51 kDa. ([Note](#))

Product Note KO/KD validation is based on published data (PMID: 25197166 and 25205373).

Properties

| | |
|----------------------|--|
| Form | Liquid |
| Buffer | PBS, 20% Glycerol |
| Preservative | 0.025% ProClin 300 |
| Storage | Store as concentrated solution. Centrifuge briefly prior to opening vial. For short-term storage (1-2 weeks), store at 4°C. For long-term storage, aliquot and store at -20°C or below. Avoid multiple freeze-thaw cycles. |
| Concentration | 0.5 mg/ml (Please refer to the vial label for the specific concentration.) |
| Immunogen | Recombinant protein encompassing a sequence within the center region of human KLF5. The exact sequence is proprietary. |
| Purification | Purified by antigen-affinity chromatography. |
| Conjugation | Unconjugated |

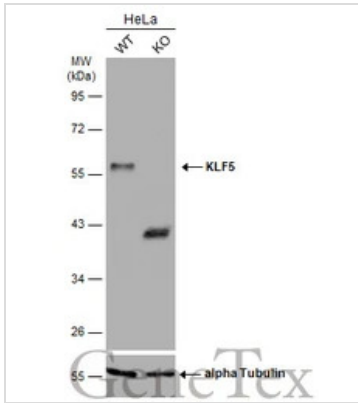


For full product information, images and publications, please visit our [website](#).

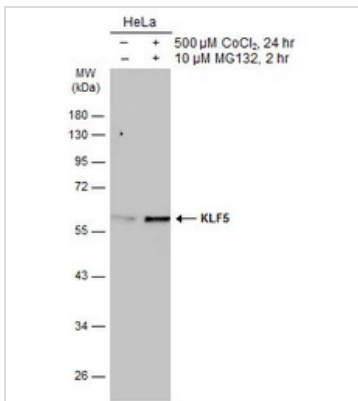
For laboratory research use only. Not for any clinical, therapeutic, or diagnostic use in humans or animals. Not for animal or human consumption.

Note

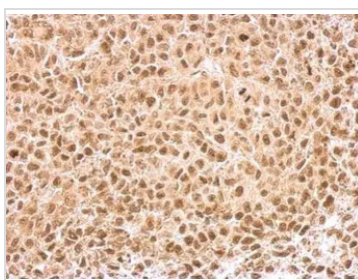
Purchasers shall not, and agree not to enable third parties to, analyze, copy, reverse engineer or otherwise attempt to determine the structure or sequence of the product.

DATA IMAGES

GTX103289 WB Image

Wild-type (WT) and KLF5 knockout (KO) HeLa cell extracts (30 µg) were separated by 10% SDS-PAGE, and the membrane was blotted with KLF5 antibody (GTX103289) diluted at 1:1000. The HRP-conjugated anti-rabbit IgG antibody (GTX213110-01) was used to detect the primary antibody.


GTX103289 WB Image

Untreated (-) and treated (+) HeLa whole cell extracts (30 µg) were separated by 10% SDS-PAGE, and the membrane was blotted with KLF5 antibody (GTX103289) diluted at 1:1000. The HRP-conjugated anti-rabbit IgG antibody (GTX213110-01) was used to detect the primary antibody.


GTX103289 IHC-P Image

KLF5 antibody detects KLF5 protein at nucleus on HeLa xenograft by immunohistochemical analysis.

Sample: Paraffin-embedded HeLa xenograft.

KLF5 antibody (GTX103289) dilution: 1:500.

Antigen Retrieval: Trilogy™ (EDTA based, pH 8.0) buffer, 15min



For full product information, images and publications, please visit our [website](https://www.genetex.com).