

Lamin B1 antibody

Cat. No. GTX103292

Host	Rabbit
Clonality	Polyclonal
Isotype	IgG
Applications	WB, IHC-P, IP
Reactivity	Human, Mouse, Rat, Hamster

References (48)

★★★★☆ Review (3)

Package

100 µl, 25 µl

Applications

Application Note

*Optimal dilutions/concentrations should be determined by the researcher.

Suggested dilution	Recommended dilution
WB	1:500-1:20000
IHC-P	1:100-1:1000
IP	1:100-1:500

Not tested in other applications.

Calculated MW 66 kDa. ([Note](#))

Properties

Form	Liquid
Buffer	PBS, 20% Glycerol
Preservative	0.025% ProClin 300
Storage	Store as concentrated solution. Centrifuge briefly prior to opening vial. For short-term storage (1-2 weeks), store at 4°C. For long-term storage, aliquot and store at -20°C or below. Avoid multiple freeze-thaw cycles.
Concentration	0.64 mg/ml (Please refer to the vial label for the specific concentration.)
Immunogen	Recombinant protein encompassing a sequence within the center region of human Lamin B1. The exact sequence is proprietary.
Purification	Purified by antigen-affinity chromatography.
Conjugation	Unconjugated

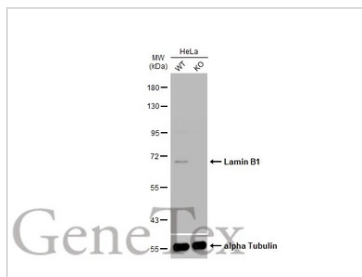
Note

For laboratory research use only. Not for any clinical, therapeutic, or diagnostic use in humans or animals. Not for animal or human consumption.

Purchasers shall not, and agree not to enable third parties to, analyze, copy, reverse engineer or otherwise attempt to determine the structure or sequence of the product.

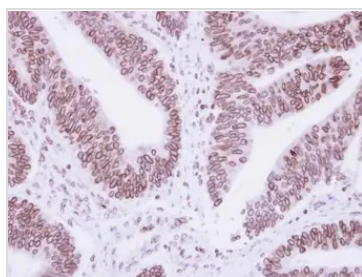
For full product information, images and publications, please visit our [website](#).

DATA IMAGES



GTX103292 WB Image

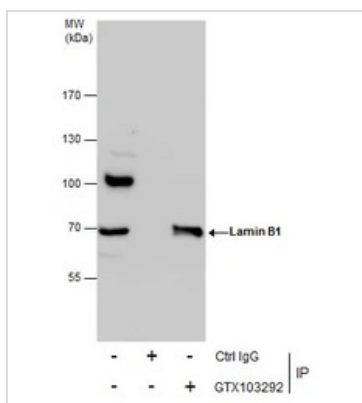
Wild-type (WT) and Lamin B1 knockout (KO) HeLa cell extracts (30 µg) were separated by 7.5% SDS-PAGE, and the membrane was blotted with Lamin B1 antibody (GTX103292) diluted at 1:10000. The HRP-conjugated anti-rabbit IgG antibody (GTX213110-01) was used to detect the primary antibody.



GTX103292 IHC-P Image

Immunohistochemical analysis of paraffin-embedded human colon carcinoma, using Lamin B1 antibody (GTX103292) at 1:250 dilution.

Antigen Retrieval: Trilogy™ (EDTA based, pH 8.0) buffer, 15min

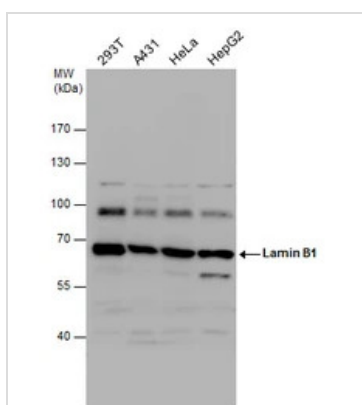


GTX103292 IP Image

Immunoprecipitation of Lamin B1 protein from 293T whole cell extracts using 5 µg of Lamin B1 antibody (GTX103292).

Western blot analysis was performed using Lamin B1 antibody (GTX103292).

EasyBlot anti-Rabbit IgG (GTX221666-01) was used as a secondary reagent.



GTX103292 WB Image

Lamin B1 antibody detects Lamin B1 protein by Western blot analysis. Various whole cell extracts (30 µg) were separated by 7.5% SDS-PAGE, and the membrane was blotted with Lamin B1 antibody (GTX103292) diluted by 1:1000.



For full product information, images and publications, please visit our [website](https://www.genetex.com).