

## NRF2 antibody [N2C2], Internal

Cat. No. GTX103322

<b>Host</b>	Rabbit
<b>Clonality</b>	Polyclonal
<b>Isotype</b>	IgG
<b>Applications</b>	WB, ICC/IF, IHC-P, FCM, IP, ChIP assay
<b>Reactivity</b>	Human, Mouse, Rat, Zebrafish, Alligator, Plant, Bird

References ( 144 )

★★★★★ Review ( 4 )

Package

100 µl, 25 µl

## PRODUCT

## Summary

NRF2 antibody recognizes NRF2 protein, a basic leucine zipper region (bZip) transcription factor (predicted molecular weight of 68 kDa) that regulates expression of proteins with antioxidant and detoxification functions. NRF2 antibodies are commonly used to study oxidative stress, cell damage, metabolism, and immune response mechanisms, among others.

## Applications

## Application Note

\*Optimal dilutions/concentrations should be determined by the researcher.

Suggested dilution	Recommended dilution
WB	1:500-1:3000
ICC/IF	1:100-1:1000
IHC-P	1:100-1:1000
FCM	Assay dependent
IP	1:100-1:500
ChIP assay	Assay dependent

Not tested in other applications.

## Calculated MW

68 kDa. ( [Note](#) )

## Observed MW (kDa)

110 kDa. The observed M.W. is based on the following publication. PMID: 22703241

## Product Note

KO/KD validation is based on published data (PMID: 27023634).

## Properties

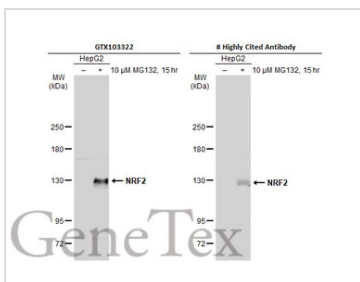
<b>Form</b>	Liquid
<b>Buffer</b>	PBS, 1% BSA, 20% Glycerol
<b>Preservative</b>	0.025% ProClin 300
<b>Storage</b>	Store as concentrated solution. Centrifuge briefly prior to opening vial. For short-term storage (1-2 weeks), store at 4°C. For long-term storage, aliquot and store at -20°C or below. Avoid multiple freeze-thaw cycles.



For full product information, images and publications, please visit our [website](#).

<b>Concentration</b>	0.26 mg/ml (Please refer to the vial label for the specific concentration.)
<b>Immunogen</b>	Recombinant protein encompassing a sequence within the center region of human NRF2. The exact sequence is proprietary.
<b>Purification</b>	Purified by antigen-affinity chromatography.
<b>Conjugation</b>	Unconjugated
<b>Note</b>	For laboratory research use only. Not for any clinical, therapeutic, or diagnostic use in humans or animals. Not for animal or human consumption.  Purchasers shall not, and agree not to enable third parties to, analyze, copy, reverse engineer or otherwise attempt to determine the structure or sequence of the product.

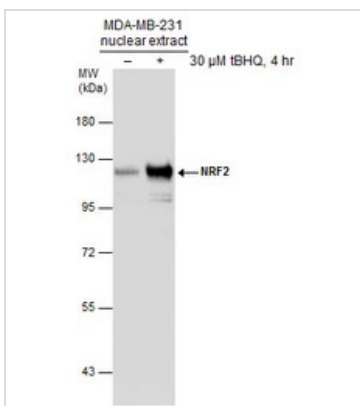
**DATA IMAGES**



**GTX103322 WB Image**

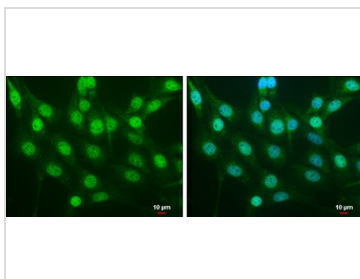
Untreated (-) and treated (+) HepG2 whole cell extracts (30 μg) were separated by 5% SDS-PAGE, and the membranes were blotted with NRF2 antibody [N2C2], Internal (GTX103322) diluted at 1:500 and competitor's antibody diluted at 1:500. The HRP-conjugated anti-rabbit IgG antibody (GTX213110-01) was used to detect the primary antibody.

\*The competitor is not affiliated with GeneTex and does not endorse this product.



**GTX103322 WB Image**

Untreated (-) and treated (+) MDA-MB-231 nuclear extracts (30 μg) were separated by 7.5% SDS-PAGE, and the membrane was blotted with NRF2 antibody [N2C2], Internal (GTX103322) diluted at 1:1000.



**GTX103322 ICC/IF Image**

NRF2 antibody [N2C2], Internal detects NRF2 protein at cytoplasm and nucleus by immunofluorescent analysis.

Sample: NIH/3T3 cells were fixed in 4% paraformaldehyde at RT for 15 min.

Green: NRF2 protein stained by NRF2 antibody [N2C2], Internal (GTX103322) diluted at 1:500.

Blue: Hoechst 33342 staining.

Scale bar = 10 μm.



For full product information, images and publications, please visit our [website](#).