

NRF2 antibody [N2C2], Internal

Cat. No. GTX103322

Host	Rabbit
Clonality	Polyclonal
Isotype	IgG
Applications	WB, ICC/IF, IHC-P, FCM, IP, ChIP assay
Reactivity	Human, Mouse, Rat, Zebrafish, Alligator, Plant, Bird

References (146)

★★★★★ Review (4)

Package

100 µl, 25 µl

PRODUCT

Summary

NRF2 antibody recognizes NRF2 protein, a basic leucine zipper region (bZip) transcription factor (predicted molecular weight of 68 kDa) that regulates expression of proteins with antioxidant and detoxification functions. NRF2 antibodies are commonly used to study oxidative stress, cell damage, metabolism, and immune response mechanisms, among others.

Applications

Application Note

*Optimal dilutions/concentrations should be determined by the researcher.

Suggested dilution	Recommended dilution
WB	1:500-1:3000
ICC/IF	1:100-1:1000
IHC-P	1:100-1:1000
FCM	Assay dependent
IP	1:100-1:500
ChIP assay	Assay dependent

Not tested in other applications.

Calculated MW

68 kDa. ([Note](#))

Observed MW (kDa)

110 kDa. The observed M.W. is based on the following publication. PMID: 22703241

Product Note

KO/KD validation is based on published data (PMID: 27023634).

Properties

Form	Liquid
Buffer	PBS, 1% BSA, 20% Glycerol
Preservative	0.025% ProClin 300
Storage	Store as concentrated solution. Centrifuge briefly prior to opening vial. For short-term storage (1-2 weeks), store at 4°C. For long-term storage, aliquot and store at -20°C or below. Avoid multiple freeze-thaw cycles.

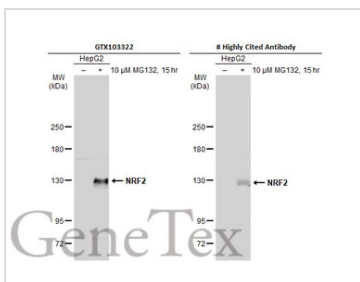


For full product information, images and publications, please visit our [website](#).

Date 2026 / 06 / 17 Page 1 of 2

Concentration	0.26 mg/ml (Please refer to the vial label for the specific concentration.)
Immunogen	Recombinant protein encompassing a sequence within the center region of human NRF2. The exact sequence is proprietary.
Purification	Purified by antigen-affinity chromatography.
Conjugation	Unconjugated
Note	For laboratory research use only. Not for any clinical, therapeutic, or diagnostic use in humans or animals. Not for animal or human consumption. Purchasers shall not, and agree not to enable third parties to, analyze, copy, reverse engineer or otherwise attempt to determine the structure or sequence of the product.

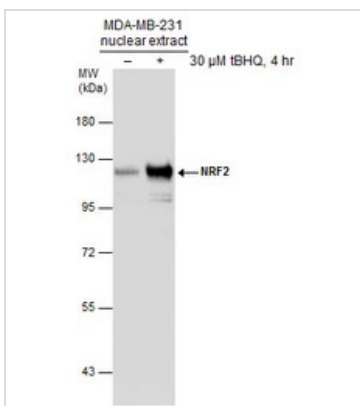
DATA IMAGES



GTX103322 WB Image

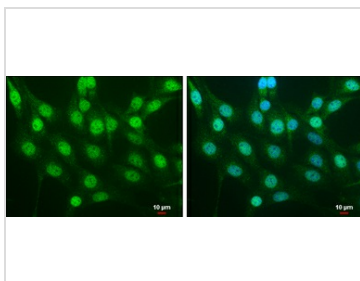
Untreated (-) and treated (+) HepG2 whole cell extracts (30 µg) were separated by 5% SDS-PAGE, and the membranes were blotted with NRF2 antibody [N2C2], Internal (GTX103322) diluted at 1:500 and competitor's antibody diluted at 1:500. The HRP-conjugated anti-rabbit IgG antibody (GTX213110-01) was used to detect the primary antibody.

*The competitor is not affiliated with GeneTex and does not endorse this product.



GTX103322 WB Image

Untreated (-) and treated (+) MDA-MB-231 nuclear extracts (30 µg) were separated by 7.5% SDS-PAGE, and the membrane was blotted with NRF2 antibody [N2C2], Internal (GTX103322) diluted at 1:1000.



GTX103322 ICC/IF Image

NRF2 antibody [N2C2], Internal detects NRF2 protein at cytoplasm and nucleus by immunofluorescent analysis.

Sample: NIH/3T3 cells were fixed in 4% paraformaldehyde at RT for 15 min.

Green: NRF2 protein stained by NRF2 antibody [N2C2], Internal (GTX103322) diluted at 1:500.

Blue: Hoechst 33342 staining.

Scale bar = 10 µm.



For full product information, images and publications, please visit our [website](#).