

Dengue virus Capsid protein antibody

Cat. No. GTX103343

Host	Rabbit
Clonality	Polyclonal
Isotype	IgG
Applications	WB, ICC/IF, FCM
Reactivity	Dengue virus 2

References (23)

Package

100 µl, 25 µl

Applications

Application Note

*Optimal dilutions/concentrations should be determined by the researcher.

Suggested dilution	Recommended dilution
WB	1:500-1:3000
ICC/IF	1:1000-1:2000
FCM	Assay dependent

Not tested in other applications.

Calculated MW 12 kDa. ([Note](#))

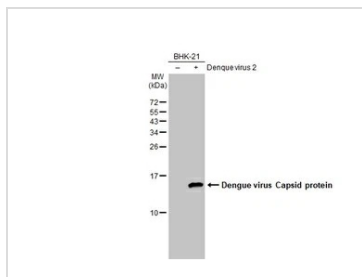
Properties

Form	Liquid
Buffer	PBS, 1% BSA, 20% Glycerol
Preservative	0.025% ProClin 300
Storage	Store as concentrated solution. Centrifuge briefly prior to opening vial. For short-term storage (1-2 weeks), store at 4°C. For long-term storage, aliquot and store at -20°C or below. Avoid multiple freeze-thaw cycles.
Concentration	0.16 mg/ml (Please refer to the vial label for the specific concentration.)
Immunogen	Carrier-protein conjugated synthetic peptide encompassing a sequence within the N-terminus region of Dengue virus Capsid protein (Dengue virus 2 (strain 16681 PDK 53)). The exact sequence is proprietary.
Purification	Purified by antigen-affinity chromatography.
Conjugation	Unconjugated
Note	For laboratory research use only. Not for any clinical, therapeutic, or diagnostic use in humans or animals. Not for animal or human consumption. Purchasers shall not, and agree not to enable third parties to, analyze, copy, reverse engineer or otherwise attempt to determine the structure or sequence of the product.

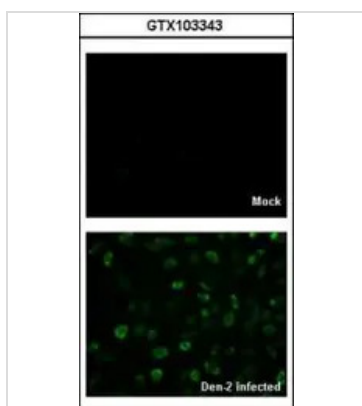


For full product information, images and publications, please visit our [website](#).

DATA IMAGES

**GTX103343 WB Image**

Non-infected (-) and infected (+) BHK-21 whole cell extracts (30 µg) were separated by 15% SDS-PAGE, and the membrane was blotted with Dengue virus Capsid protein antibody (GTX103343) diluted at 1:1000. The HRP-conjugated anti-rabbit IgG antibody (GTX213110-01) was used to detect the primary antibody.

**GTX103343 ICC/IF Image**

GTX103343 IF Image Immunofluorescence analysis of Denque virus 2-infected BHK-21, using Capside Protein (Dengue virus 2) antibody (GTX103343) at 1:2000 dilution.



For full product information, images and publications, please visit our [website](#).