

## Dengue virus NS1 protein antibody

Cat. No. GTX103346

Host	Rabbit
Clonality	Polyclonal
Isotype	IgG
Applications	WB, ICC/IF, ELISA
Reactivity	Dengue virus 2

References ( 10 )

★★★★★ Review ( 1 )

Package

100 µl, 25 µl

## Applications

## Application Note

\*Optimal dilutions/concentrations should be determined by the researcher.

Suggested dilution	Recommended dilution
WB	1:500-1:3000
ICC/IF	1:1000-1:2000
ELISA	Assay dependent

Not tested in other applications.

Calculated MW 40 kDa. ( [Note](#) )

## Properties

Form	Liquid
Buffer	PBS, 20% Glycerol
Preservative	0.025% ProClin 300
Storage	Store as concentrated solution. Centrifuge briefly prior to opening vial. For short-term storage (1-2 weeks), store at 4°C. For long-term storage, aliquot and store at -20°C or below. Avoid multiple freeze-thaw cycles.
Concentration	1 mg/ml (Please refer to the vial label for the specific concentration.)
Immunogen	Carrier-protein conjugated synthetic peptide encompassing a sequence within the N-terminus region of Dengue virus NS1 protein (Dengue virus 2 (strain 16681 PDK 53)). The exact sequence is proprietary.
Purification	Purified by antigen-affinity chromatography.
Conjugation	Unconjugated

## Note

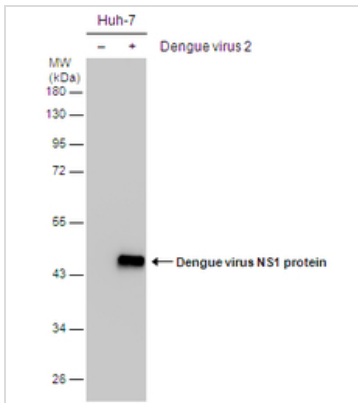
For laboratory research use only. Not for any clinical, therapeutic, or diagnostic use in humans or animals. Not for animal or human consumption.

Purchasers shall not, and agree not to enable third parties to, analyze, copy, reverse engineer or otherwise attempt to determine the structure or sequence of the product.



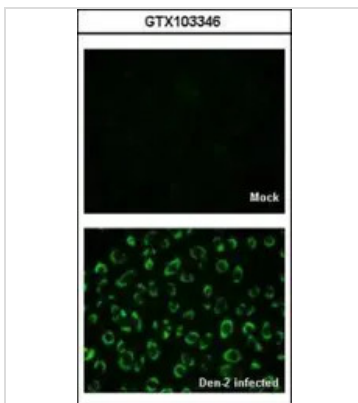
For full product information, images and publications, please visit our [website](#).

DATA IMAGES



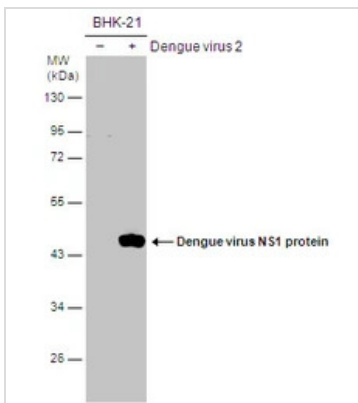
**GTX103346 WB Image**

Non-infected (–) and infected (+) Huh-7 whole cell extracts (15 µg) were separated by 10% SDS-PAGE, and the membrane was blotted with Dengue virus NS1 protein antibody (GTX103346) diluted at 1:2000.



**GTX103346 ICC/IF Image**

GTX103346 IF Image Immunofluorescence analysis of Denque virus 2-infected BHK-21, using NS1 (Dengue virus) antibody (GTX103346) at 1:2000 dilution.



**GTX103346 WB Image**

Non-infected (–) and infected (+) BHK-21 whole cell extracts (15 µg) were separated by 10% SDS-PAGE, and the membrane was blotted with Dengue virus NS1 protein antibody (GTX103346) diluted at 1:1000.



For full product information, images and publications, please visit our [website](https://www.genetex.com).