

Dengue virus NS5 protein antibody

Cat. No. GTX103350

Host	Rabbit
Clonality	Polyclonal
Isotype	IgG
Applications	WB, ICC/IF
Reactivity	Dengue virus 2

References (22)

Package

100 µl, 25 µl

Applications

Application Note

*Optimal dilutions/concentrations should be determined by the researcher.

Suggested dilution	Recommended dilution
WB	1:1000-1:10000
ICC/IF	1:100-1:1000

Not tested in other applications.

Calculated MW 103 kDa. ([Note](#))

Product Note This antibody was raised against Dengue virus 2 NS5 protein, which may cross react with NS5 protein of Dengue virus 3.

Properties

Form	Liquid
Buffer	PBS, 1% BSA, 20% Glycerol
Preservative	0.025% ProClin 300
Storage	Store as concentrated solution. Centrifuge briefly prior to opening vial. For short-term storage (1-2 weeks), store at 4°C. For long-term storage, aliquot and store at -20°C or below. Avoid multiple freeze-thaw cycles.
Concentration	0.19 mg/ml (Please refer to the vial label for the specific concentration.)
Immunogen	Carrier-protein conjugated synthetic peptide encompassing a sequence within the C-terminus region of Dengue virus NS5 protein (Dengue virus 2 (strain 16681 PDK 53)). The exact sequence is proprietary.
Purification	Purified by antigen-affinity chromatography.
Conjugation	Unconjugated

Note

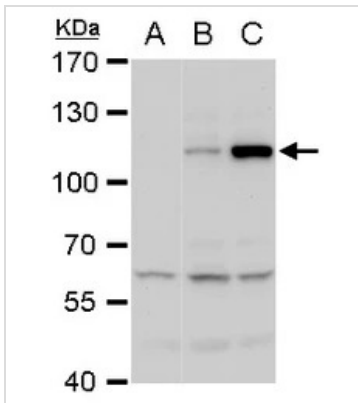
For laboratory research use only. Not for any clinical, therapeutic, or diagnostic use in humans or animals. Not for animal or human consumption.

Purchasers shall not, and agree not to enable third parties to, analyze, copy, reverse engineer or otherwise attempt to determine the structure or sequence of the product.



For full product information, images and publications, please visit our [website](#).

DATA IMAGES



GTx103350 WB Image

NS5 (Dengue virus) antibody detects NS5 (Dengue virus) protein by western blot analysis.

A. 30 µg BHK-21 whole cell extract

B. 30 µg whole cell extract of Dengue virus type 2 infected BHK-21 cells

C. 30 µg whole cell extract of Dengue virus type 3 infected BHK-21 cells

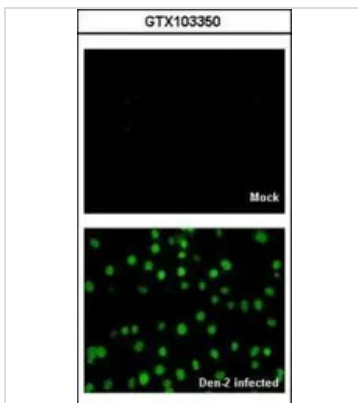
7.5% SDS-PAGE

NS5 (Dengue virus) antibody (GTx103350) dilution: 1:5000

The HRP-conjugated anti-rabbit IgG antibody (GTx213110-01) was used to detect the primary antibody.

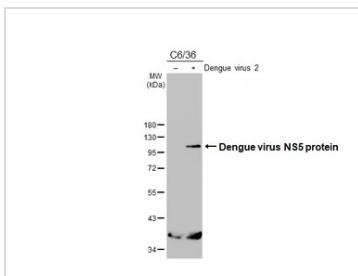
The results may vary from different DENV strains, viral infection status, and culture conditions.

Reference: [Proc Natl Acad Sci U S A. 2013 Apr 23;110\(17\):6795-9](#), [J Infect Dis. 2011 Jun 15;203\(12\):1775-83](#).



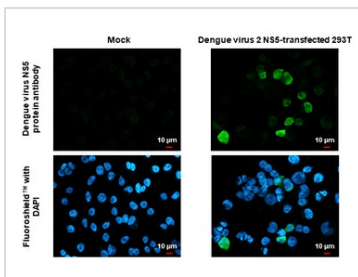
GTx103350 ICC/IF Image

GTx103350 IF Image Immunofluorescence analysis of Dengue virus 2-infected BHK-21, using Non-structural protein NS5 (Dengue virus 2) antibody (GTx103350) at 1:2000 dilution.



GTx103350 WB Image

Non-infected (-) and infected (+) C6/36 whole cell extracts (15 µg) were separated by 10% SDS-PAGE, and the membrane was blotted with Dengue virus NS5 protein antibody (GTx103350) diluted at 1:5000. The HRP-conjugated anti-rabbit IgG antibody (GTx213110-01) was used to detect the primary antibody, and the signal was developed with Trident ECL plus-Enhanced.



GTx103350 ICC/IF Image

Dengue virus NS5 protein antibody detects Dengue virus NS5 protein protein by immunofluorescent analysis.

Sample: Mock and transfected 293T cells were fixed in 4% paraformaldehyde at RT for 15 min.

Green: Dengue virus NS5 protein stained by Dengue virus NS5 protein antibody (GTx103350) diluted at 1:500.

Blue: Fluoroshield with DAPI (GTx30920).



For full product information, images and publications, please visit our [website](#).