

Hepatitis C virus E2 protein antibody

Cat. No. GTX103353

Host	Rabbit
Clonality	Polyclonal
Isotype	IgG
Applications	WB, ICC/IF, Blocking, EM, Neutralizing/Inhibition
Reactivity	Hepatitis C virus

References (5)

Package

100 µl, 25 µl

Applications

Application Note

*Optimal dilutions/concentrations should be determined by the researcher.

Suggested dilution	Recommended dilution
WB	Assay dependent
ICC/IF	Assay dependent
Blocking	Assay dependent
EM	Assay dependent
Neutralizing/Inhibition	Assay dependent

Not tested in other applications.

Properties

Form	Liquid
Buffer	PBS, 40% Glycerol
Preservative	0.01% Thimerosal
Storage	Store as concentrated solution. Centrifuge briefly prior to opening vial. For short-term storage (1-2 weeks), store at 4°C. For long-term storage, aliquot and store at -20°C or below. Avoid multiple freeze-thaw cycles.
Concentration	1 mg/ml (Please refer to the vial label for the specific concentration.)
Immunogen	Carrier-protein conjugated synthetic peptide encompassing a sequence within the N-terminus region of Hepatitis C virus E2 protein (HCV 2a (strain JFH-1)). The exact sequence is proprietary.
Purification	Purified by antigen-affinity chromatography.
Conjugation	Unconjugated

Note

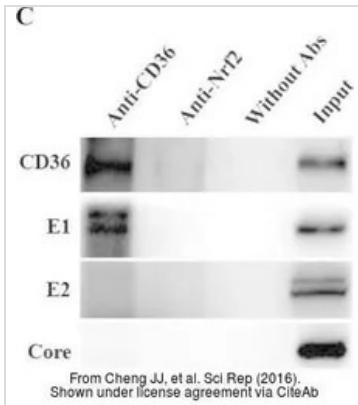
For laboratory research use only. Not for any clinical, therapeutic, or diagnostic use in humans or animals. Not for animal or human consumption.

Purchasers shall not, and agree not to enable third parties to, analyze, copy, reverse engineer or otherwise attempt to determine the structure or sequence of the product.



For full product information, images and publications, please visit our [website](#).

DATA IMAGES



GTX103353 WB Image

The data was published in the journal Sci Rep in 2016. [PMID: 26898231](https://pubmed.ncbi.nlm.nih.gov/26898231/)



For full product information, images and publications, please visit our [website](https://www.genetex.com).