

## Neuropeptide Y antibody

Cat. No. GTX10341

Host	Guinea pig
Clonality	Polyclonal
Isotype	IgG
Applications	IHC-Fr, IHC
Reactivity	Mouse, Rat

Package

50 µl

## Applications

## Application Note

\*Optimal dilutions/concentrations should be determined by the researcher.

Suggested dilution	Recommended dilution
IHC-Fr	5-10 µg/mL
IHC	Assay dependent

Not tested in other applications.

## Properties

Form	Liquid
Buffer	PBS
Preservative	0.05% Sodium azide
Storage	Store as concentrated solution. Centrifuge briefly prior to opening vial. For short-term storage (1-2 weeks), store at 4°C. For long-term storage, aliquot and store at -20°C or below. Avoid multiple freeze-thaw cycles.
Concentration	Batch dependent (Please refer to the vial label for the specific concentration.)
Immunogen	SDLLMRESTENAPRTR
Purification	Protein G purified
Conjugation	Unconjugated

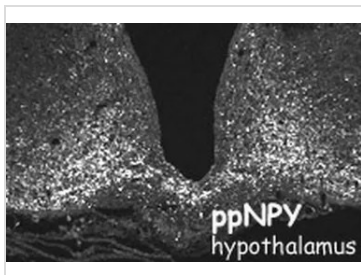
## Note

For laboratory research use only. Not for any clinical, therapeutic, or diagnostic use in humans or animals. Not for animal or human consumption.

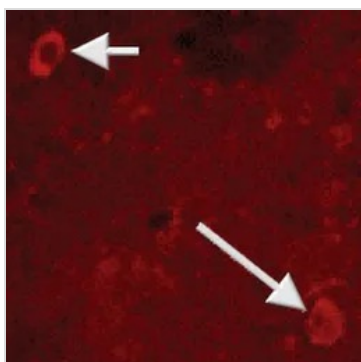
Purchasers shall not, and agree not to enable third parties to, analyze, copy, reverse engineer or otherwise attempt to determine the structure or sequence of the product.



For full product information, images and publications, please visit our [website](#).

**DATA IMAGES**

**GTX10341 IHC-Fr Image**

IHC-Fr analysis of rat hypothalamus using GTX10341 Neuropeptide Y antibody.


**GTX10341 IHC Image**

IHC analysis of striatal rat interneurons using GTX10341 Neuropeptide Y antibody.



For full product information, images and publications, please visit our [website](#).