

c-Myc antibody

Cat. No. GTX103436

Host	Rabbit
Clonality	Polyclonal
Isotype	IgG
Applications	WB, ICC/IF, IHC-P, IHC-Fr, IP, ChIP assay
Reactivity	Human, Mouse, Xenopus laevis

References (35)

Package

100 µl, 25 µl

Applications

Application Note

*Optimal dilutions/concentrations should be determined by the researcher.

Suggested dilution	Recommended dilution
WB	1:500-1:3000
ICC/IF	1:100-1:1000
IHC-P	Assay dependent
IHC-Fr	Assay dependent
IP	1:100-1:500
ChIP assay	Assay dependent

Not tested in other applications.

Calculated MW 49 kDa. ([Note](#))

Product Note This antibody can detect the endogenous c-Myc, but it is unable to recognize the c-Myc tag.

Properties

Form	Liquid
Buffer	PBS, 1% BSA, 20% Glycerol
Preservative	0.025% ProClin 300
Storage	Store as concentrated solution. Centrifuge briefly prior to opening vial. For short-term storage (1-2 weeks), store at 4°C. For long-term storage, aliquot and store at -20°C or below. Avoid multiple freeze-thaw cycles.
Concentration	0.29 mg/ml (Please refer to the vial label for the specific concentration.)
Immunogen	Recombinant protein encompassing a sequence within the center region of human c-Myc. The exact sequence is proprietary.
Purification	Purified by antigen-affinity chromatography.



For full product information, images and publications, please visit our [website](#).

Conjugation

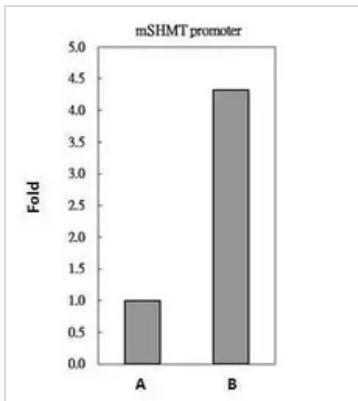
Unconjugated

For laboratory research use only. Not for any clinical, therapeutic, or diagnostic use in humans or animals. Not for animal or human consumption.

Note

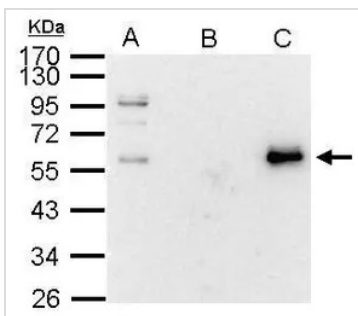
Purchasers shall not, and agree not to enable third parties to, analyze, copy, reverse engineer or otherwise attempt to determine the structure or sequence of the product.

DATA IMAGES



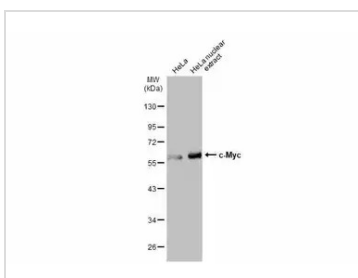
GTx103436 ChIP assay Image

c-Myc antibody immunoprecipitates c-Myc protein-DNA in ChIP experiments. ChIP Sample: 293T whole cell lysate/extract A. 5 µg preimmune rabbit IgG B. 5 µg of c-Myc antibody (GTx103436) The precipitated DNA was detected by PCR with primer set targeting to mSHMT promoter.



GTx103436 IP Image

c-Myc antibody immunoprecipitates c-Myc protein in IP experiments. IP Sample: 1000 µg 293T whole cell lysate/extract A. 20 µg 293T whole cell lysate/extract B. Control with 2.5 µg of preimmune rabbit IgG C. Immunoprecipitation of c-Myc protein by 2.5 µg of c-Myc antibody (GTx103436) 10% SDS-PAGE The immunoprecipitated c-Myc protein was detected by c-Myc antibody (GTx103436) diluted at 1:1000. EasyBlot anti-rabbit IgG (GTx221666-01) was used as a secondary reagent.



GTx103436 WB Image

HeLa whole cell and nuclear extracts (30 µg) were separated by 10% SDS-PAGE, and the membrane was blotted with c-Myc antibody (GTx103436) diluted at 1:3000. The HRP-conjugated anti-rabbit IgG antibody (GTx213110-01) was used to detect the primary antibody.



For full product information, images and publications, please visit our [website](https://www.genetex.com).