

## ZNF45 antibody [N2C3]

**Cat. No. GTX103451**

<b>Host</b>	Rabbit
<b>Clonality</b>	Polyclonal
<b>Isotype</b>	IgG
<b>Applications</b>	WB, ICC/IF, IHC-P
<b>Reactivity</b>	Human

**Package**  
100 µl, 25 µl

## Applications

**Application Note**

\*Optimal dilutions/concentrations should be determined by the researcher.

Suggested dilution	Recommended dilution
WB	1:500-1:3000
ICC/IF	1:100-1:1000
IHC-P	1:100-1:1000

Not tested in other applications.

**Calculated MW** 78 kDa. ([Note](#))

## Properties

<b>Form</b>	Liquid
<b>Buffer</b>	0.1M Tris, 0.1M Glycine, 10% Glycerol
<b>Preservative</b>	0.01% Thimerosal
<b>Storage</b>	Store as concentrated solution. Centrifuge briefly prior to opening vial. For short-term storage (1-2 weeks), store at 4°C. For long-term storage, aliquot and store at -20°C or below. Avoid multiple freeze-thaw cycles.
<b>Concentration</b>	0.5 mg/ml (Please refer to the vial label for the specific concentration.)
<b>Immunogen</b>	Recombinant protein encompassing a sequence within the center region of human ZNF45. The exact sequence is proprietary.
<b>Purification</b>	Purified by antigen-affinity chromatography.
<b>Conjugation</b>	Unconjugated

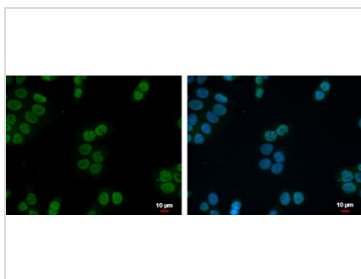
**Note** For laboratory research use only. Not for any clinical, therapeutic, or diagnostic use in humans or animals. Not for animal or human consumption.

Purchasers shall not, and agree not to enable third parties to, analyze, copy, reverse engineer or otherwise attempt to determine the structure or sequence of the product.



For full product information, images and publications, please visit our [website](#).

## DATA IMAGES

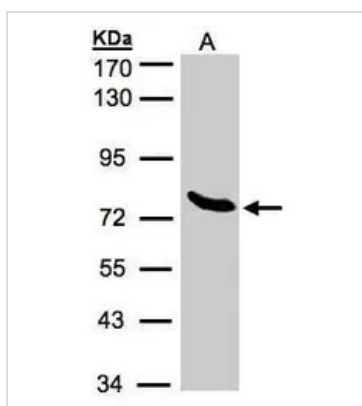
**GTX103451 ICC/IF Image**

ZNF45 antibody [N2C3] detects ZNF45 protein at nucleus by immunofluorescent analysis.

Sample: HCT116 cells were fixed in 4% paraformaldehyde at RT for 15 min.

Green: ZNF45 protein stained by ZNF45 antibody [N2C3] (GTX103451) diluted at 1:500.

Blue: Hoechst 33342 staining.

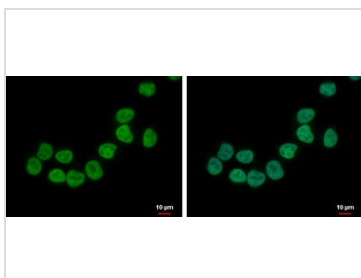
**GTX103451 WB Image**

Sample(30 µg of whole cell lysate)

A:293T

7.5% SDS PAGE

GTX103451 diluted at 1:2000

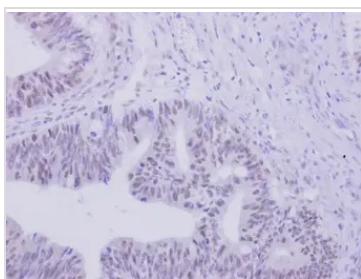
**GTX103451 ICC/IF Image**

ZNF45 antibody [N2C3] detects ZNF45 protein at nucleus by immunofluorescent analysis.

Sample: A375 cells were fixed in 4% paraformaldehyde at RT for 15 min.

Green: ZNF45 protein stained by ZNF45 antibody [N2C3] (GTX103451) diluted at 1:500.

Blue: Hoechst 33342 staining.

**GTX103451 IHC-P Image**

ZNF45 antibody [N2C3] detects ZNF45 protein at nucleus on human colon carcinoma by immunohistochemical analysis.

Sample: Paraffin-embedded human colon carcinoma.

ZNF45 antibody [N2C3] (GTX103451) dilution: 1:250.

Antigen Retrieval: Trilogy™ (EDTA based, pH 8.0) buffer, 15min



For full product information, images and publications, please visit our [website](#).