

AMPK alpha 2 antibody

Cat. No. GTX103487

Host	Rabbit
Clonality	Polyclonal
Isotype	IgG
Applications	WB, ICC/IF, IHC-P, IP
Reactivity	Human, Mouse, Rat

References (9)

★★★★★ Review (2)

Package

100 µl, 25 µl

Applications

Application Note

*Optimal dilutions/concentrations should be determined by the researcher.

Suggested dilution	Recommended dilution
WB	1:500-1:3000
ICC/IF	1:100-1:1000
IHC-P	1:100-1:1000
IP	1:100-1:500

Not tested in other applications.

Calculated MW 62 kDa. ([Note](#))**Product Note** KO/KD validation is based on published data (PMID: 29753072).

Properties

Form	Liquid
Buffer	PBS, 20% Glycerol
Preservative	0.025% ProClin 300
Storage	Store as concentrated solution. Centrifuge briefly prior to opening vial. For short-term storage (1-2 weeks), store at 4°C. For long-term storage, aliquot and store at -20°C or below. Avoid multiple freeze-thaw cycles.
Concentration	0.47 mg/ml (Please refer to the vial label for the specific concentration.)
Immunogen	Recombinant protein encompassing a sequence within the center region of human AMPK alpha 2. The exact sequence is proprietary.
Purification	Purified by antigen-affinity chromatography.
Conjugation	Unconjugated



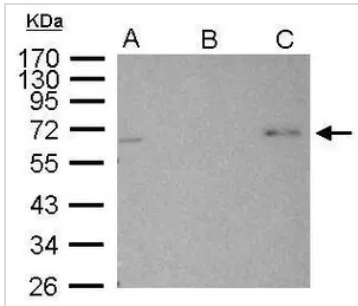
For full product information, images and publications, please visit our [website](#).

For laboratory research use only. Not for any clinical, therapeutic, or diagnostic use in humans or animals. Not for animal or human consumption.

Note

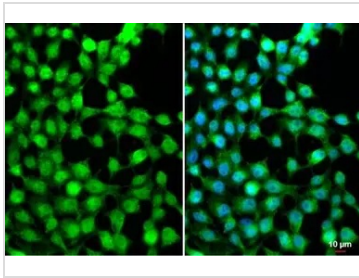
Purchasers shall not, and agree not to enable third parties to, analyze, copy, reverse engineer or otherwise attempt to determine the structure or sequence of the product.

DATA IMAGES



GTX103487 IP Image

AMPK alpha 2 antibody immunoprecipitates AMPK alpha 2 protein in IP experiments. IP Sample: 1000 µg 293T whole cell lysate/extract A. 30 µg 293T whole cell lysate/extract B. Control with 2.5 µg of preimmune rabbit IgG C. Immunoprecipitation of AMPK alpha 2 protein by 2.5 µg of AMPK alpha 2 antibody (GTX103487) 10% SDS-PAGE The immunoprecipitated AMPK alpha 2 protein was detected by AMPK alpha 2 antibody (GTX103487) diluted at 1:1000. EasyBlot anti-rabbit IgG (GTX221666-01) was used as a secondary reagent.



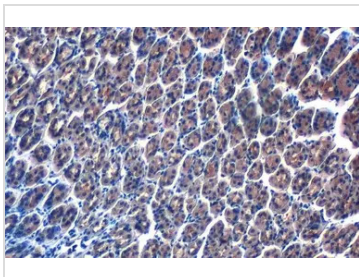
GTX103487 ICC/IF Image

AMPK alpha 2 antibody detects AMPK alpha 2 protein at cytoplasm, nucleus and vesicle by immunofluorescent analysis.

Sample: 293T cells were fixed in 4% paraformaldehyde at RT for 15 min.

Green: AMPK alpha 2 stained by AMPK alpha 2 antibody (GTX103487) diluted at 1:500.

Blue: Fluoroshield with DAPI (GTX30920).



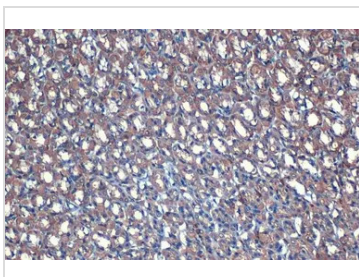
GTX103487 IHC-P Image

AMPK alpha 2 antibody detects AMPK alpha 2 protein at cytoplasm by immunohistochemical analysis.

Sample: Paraffin-embedded mouse stomach.

AMPK alpha 2 stained by AMPK alpha 2 antibody (GTX103487) diluted at 1:500.

Antigen Retrieval: Citrate buffer, pH 6.0, 15 min



GTX103487 IHC-P Image

AMPK alpha 2 antibody detects AMPK alpha 2 protein at cytoplasm by immunohistochemical analysis.

Sample: Paraffin-embedded rat stomach.

AMPK alpha 2 stained by AMPK alpha 2 antibody (GTX103487) diluted at 1:500.

Antigen Retrieval: Citrate buffer, pH 6.0, 15 min



For full product information, images and publications, please visit our [website](https://www.genetex.com).