

FMRFamide antibody

Cat. No. GTX10352

Host	Rabbit
Clonality	Polyclonal
Isotype	IgG
Applications	IHC-Fr
Reactivity	Rat

Package
50 µl

Applications

Application Note

*Optimal dilutions/concentrations should be determined by the researcher.

Suggested dilution	Recommended dilution
IHC-Fr	1:200-1:1000

Not tested in other applications.

Properties

Form	Liquid
Buffer	Serum
Preservative	0.05% Sodium azide
Storage	Store as concentrated solution. Centrifuge briefly prior to opening vial. For short-term storage (1-2 weeks), store at 4°C. For long-term storage, aliquot and store at -20°C or below. Avoid multiple freeze-thaw cycles.
Immunogen	Synthetic peptide: FMRF-NH ₂ .
Purification	Unpurified
Conjugation	Unconjugated

Note

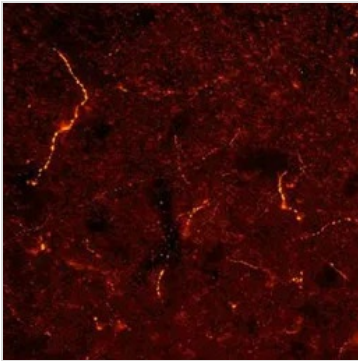
For laboratory research use only. Not for any clinical, therapeutic, or diagnostic use in humans or animals. Not for animal or human consumption.

Purchasers shall not, and agree not to enable third parties to, analyze, copy, reverse engineer or otherwise attempt to determine the structure or sequence of the product.

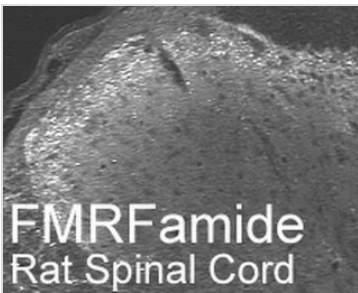


For full product information, images and publications, please visit our [website](#).

DATA IMAGES

**GTX10352 IHC-Fr Image**

IHC-Fr analysis of rat hypothalamus tissue using GTX10352 FMRFamide antibody.

**GTX10352 IHC-Fr Image**

For full product information, images and publications, please visit our [website](#).