

Substance P antibody

Cat. No. GTX10353

Host	Guinea pig
Clonality	Polyclonal
Isotype	IgG
Application	IHC-Fr, IHC
Reactivity	Human, Mouse, Rat

Reference (1)

Package

50 µl

APPLICATION

Application Note

*Optimal dilutions/concentrations should be determined by the researcher.

Suggested dilution	Recommended dilution
IHC-Fr	1:50-1:200
IHC	Assay dependent

Not tested in other applications.

Calculated MW 15 kDa. ([Note](#))

PROPERTIES

Form	Liquid
Buffer	Serum
Preservative	0.05% Sodium azide
Storage	Store as concentrated solution. Centrifuge briefly prior to opening vial. For short-term storage (1-2 weeks), store at 4°C. For long-term storage, aliquot and store at -20°C or below. Avoid multiple freeze-thaw cycles.
Immunogen	CRPKPQQFFGLM
Purification	Unpurified
Conjugation	Unconjugated

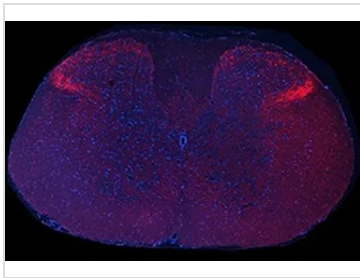
Note

For laboratory research use only. Not for any clinical, therapeutic, or diagnostic use in humans or animals. Not for animal or human consumption.

Purchasers shall not, and agree not to enable third parties to, analyze, copy, reverse engineer or otherwise attempt to determine the structure or sequence of the product.



For full product information, images and publications, please visit our [website](#).

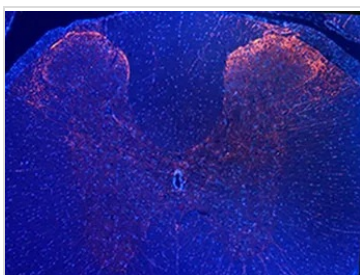
DATA IMAGES

GTX10353 IHC Image

IHC analysis of mouse spinal cord tissue using GTX10353 Substance P antibody.

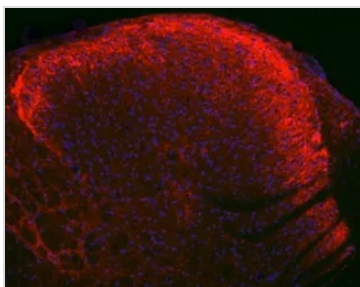
Red : Primary antibody

Blue : DAPI

Dilution : 1:200


GTX10353 IHC Image

IHC analysis of rat spinal cord tissue using GTX10353 Substance P antibody.


GTX10353 IHC Image

IHC analysis of rat spinal cord dorsal horn tissue using GTX10353 Substance P antibody.

Red : Primary antibody

Blue : DAPI



For full product information, images and publications, please visit our [website](#).