

Desmin antibody

Cat. No. GTX103557

Host	Rabbit
Clonality	Polyclonal
Isotype	IgG
Applications	WB, ICC/IF, IHC-P, IHC-Fr, FCM
Reactivity	Human, Mouse, Rat, Cat, Dog, Chicken, Pig

References (18)

Package

100 µl, 25 µl

Applications

Application Note

*Optimal dilutions/concentrations should be determined by the researcher.

Suggested dilution	Recommended dilution
WB	1:500-1:10000
ICC/IF	Assay dependent
IHC-P	1:100-1:1000
IHC-Fr	Assay dependent
FCM	Assay dependent

Not tested in other applications.

Calculated MW 54 kDa. ([Note](#))

Properties

Form	Liquid
Buffer	PBS, 20% Glycerol
Preservative	0.025% ProClin 300
Storage	Store as concentrated solution. Centrifuge briefly prior to opening vial. For short-term storage (1-2 weeks), store at 4°C. For long-term storage, aliquot and store at -20°C or below. Avoid multiple freeze-thaw cycles.
Concentration	0.66 mg/ml (Please refer to the vial label for the specific concentration.)
Immunogen	Recombinant protein encompassing a sequence within the center region of human Desmin. The exact sequence is proprietary.
Purification	Purified by antigen-affinity chromatography.
Conjugation	Unconjugated

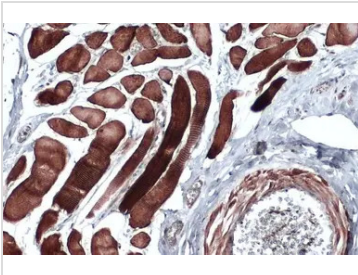


For full product information, images and publications, please visit our [website](#).

For laboratory research use only. Not for any clinical, therapeutic, or diagnostic use in humans or animals. Not for animal or human consumption.

Note
 Purchasers shall not, and agree not to enable third parties to, analyze, copy, reverse engineer or otherwise attempt to determine the structure or sequence of the product.

DATA IMAGES



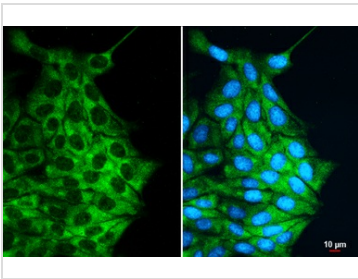
GTX103557 IHC-P Image

Desmin antibody detects Desmin protein at cell membrane and cytoplasm by immunohistochemical analysis.

Sample: Paraffin-embedded dog muscle.

Desmin stained by Desmin antibody (GTX103557) diluted at 1:500.

Antigen Retrieval: Citrate buffer, pH 6.0, 15 min

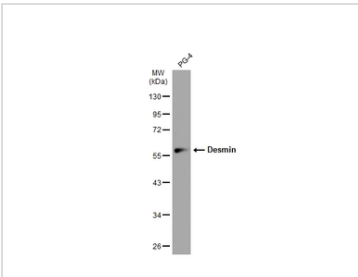


GTX103557 ICC/IF Image

Desmin antibody detects Desmin protein at cytoplasm by immunofluorescent analysis.

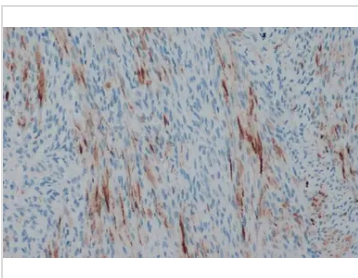
Sample: MDCK cells were fixed in 4% paraformaldehyde at RT for 15 min.

Green: Desmin stained by Desmin antibody (GTX103557) diluted at 1:500.



GTX103557 WB Image

Whole cell extract (30 µg) was separated by 10% SDS-PAGE, and the membrane was blotted with Desmin antibody (GTX103557) diluted at 1:500. The HRP-conjugated anti-rabbit IgG antibody (GTX213110-01) was used to detect the primary antibody.



GTX103557 IHC-P Image

Desmin antibody detects Desmin protein at cell membrane and cytoplasm by immunohistochemical analysis.

Sample: Paraffin-embedded dog malignant soft tissue sarcoma.

Desmin stained by Desmin antibody (GTX103557) diluted at 1:500.

Antigen Retrieval: Citrate buffer, pH 6.0, 15 min



For full product information, images and publications, please visit our [website](#).