

HIF2 alpha antibody [N1N3]

Cat. No. GTX103707

Host	Rabbit
Clonality	Polyclonal
Isotype	IgG
Applications	WB, ChIP assay
Reactivity	Human, Zebrafish

References (3)

★★★★☆ Review (2)

Package

100 µl, 25 µl

Applications

Application Note

*Optimal dilutions/concentrations should be determined by the researcher.

Suggested dilution	Recommended dilution
WB	1:500-1:3000
ChIP assay	Assay dependent

Not tested in other applications.

Calculated MW 96 kDa. ([Note](#))

Properties

Form	Liquid
Buffer	PBS, 20% Glycerol
Preservative	0.025% ProClin 300
Storage	Store as concentrated solution. Centrifuge briefly prior to opening vial. For short-term storage (1-2 weeks), store at 4°C. For long-term storage, aliquot and store at -20°C or below. Avoid multiple freeze-thaw cycles.
Concentration	1 mg/ml (Please refer to the vial label for the specific concentration.)
Immunogen	Recombinant protein encompassing a sequence within the center region of human HIF2 alpha. The exact sequence is proprietary.
Purification	Purified by antigen-affinity chromatography.
Conjugation	Unconjugated

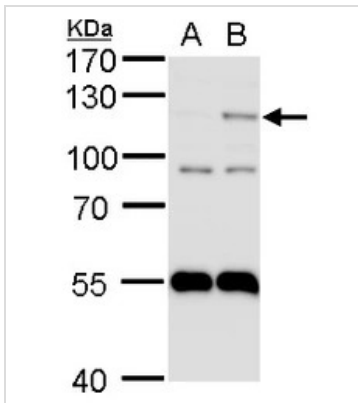
Note

For laboratory research use only. Not for any clinical, therapeutic, or diagnostic use in humans or animals. Not for animal or human consumption.

Purchasers shall not, and agree not to enable third parties to, analyze, copy, reverse engineer or otherwise attempt to determine the structure or sequence of the product.

For full product information, images and publications, please visit our [website](#).

DATA IMAGES



GTX103707 WB Image

HIF2 alpha antibody detects HIF2 alpha protein by western blot analysis.

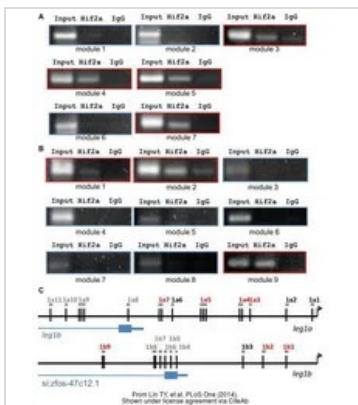
A. 30 µg HepG2 whole cell lysate/extract

B. 30 µg HepG2 whole cell lysate/extract (1% O₂ treatment for 24 hr)

7.5% SDS-PAGE

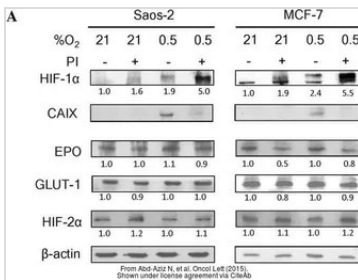
HIF2 alpha antibody (GTX103707) dilution: 1:1000

The HRP-conjugated anti-rabbit IgG antibody (GTX213110-01) was used to detect the primary antibody.



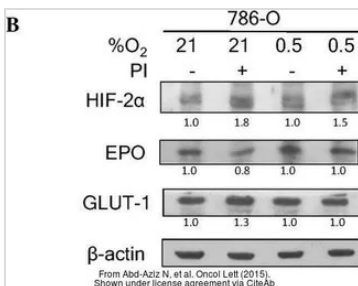
GTX103707 ChIP assay Image

The data was published in the journal PLoS One in 2014. [PMID: 25000307](https://pubmed.ncbi.nlm.nih.gov/25000307/)



GTX103707 WB Image

The data was published in the journal Oncol Lett in 2015. [PMID: 26622817](https://pubmed.ncbi.nlm.nih.gov/26622817/)



GTX103707 WB Image

The data was published in the journal Oncol Lett in 2015. [PMID: 26622817](https://pubmed.ncbi.nlm.nih.gov/26622817/)



For full product information, images and publications, please visit our [website](https://www.genetex.com).