

## Cytokeratin 17 antibody

Cat. No. GTX103765

Host	Rabbit
Clonality	Polyclonal
Isotype	IgG
Applications	WB, ICC/IF, IHC-P
Reactivity	Human, Mouse, Rat

References ( 3 )

★★★★★ Review ( 1 )

Package

100 µl, 25 µl

## Applications

## Application Note

\*Optimal dilutions/concentrations should be determined by the researcher.

Suggested dilution	Recommended dilution
WB	1:5000-1:20000
ICC/IF	1:100-1:1000
IHC-P	1:100-1:1000

Not tested in other applications.

Calculated MW 48 kDa. ( [Note](#) )

## Properties

Form	Liquid
Buffer	PBS, 20% Glycerol
Preservative	0.025% ProClin 300
Storage	Store as concentrated solution. Centrifuge briefly prior to opening vial. For short-term storage (1-2 weeks), store at 4°C. For long-term storage, aliquot and store at -20°C or below. Avoid multiple freeze-thaw cycles.
Concentration	0.69 mg/ml (Please refer to the vial label for the specific concentration.)
Immunogen	Recombinant protein encompassing a sequence within the center region of human Cytokeratin 17. The exact sequence is proprietary.
Purification	Purified by antigen-affinity chromatography.
Conjugation	Unconjugated

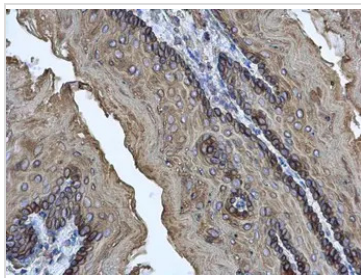
## Note

For laboratory research use only. Not for any clinical, therapeutic, or diagnostic use in humans or animals. Not for animal or human consumption.

Purchasers shall not, and agree not to enable third parties to, analyze, copy, reverse engineer or otherwise attempt to determine the structure or sequence of the product.



For full product information, images and publications, please visit our [website](#).

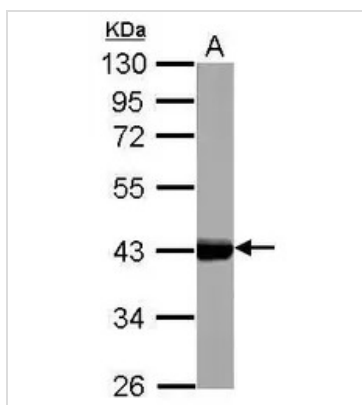
**DATA IMAGES**

**GTx103765 IHC-P Image**

Cytokeratin 17 antibody detects Cytokeratin 17 protein at cytoplasm on mouse esophagus by immunohistochemical analysis.

Sample: Paraffin-embedded mouse esophagus.

Cytokeratin 17 antibody (GTx103765) diluted at 1:500.

Antigen Retrieval: Trilogy™ (EDTA based, pH 8.0) buffer, 15min

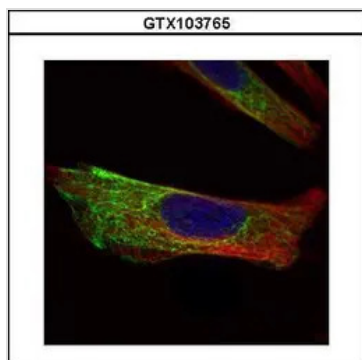

**GTx103765 WB Image**

Sample (50 ug of whole cell lysate)

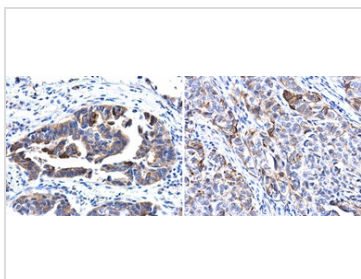
A: Rat bladder

10% SDS PAGE

GTx103765 diluted at 1:10000


**GTx103765 ICC/IF Image**

Confocal immunofluorescence analysis (Olympus FV10i) of paraformaldehyde-fixed HeLa, using Cytokeratin 17 (GTx103765) antibody (Green) at 1:500 dilution. Alpha-tubulin filaments were labeled with GTx11304 (Red) at 1:2500.


**GTx103765 IHC-P Image**

Cytokeratin 17 antibody detects Cytokeratin 17 protein at cytoplasm in human cervical metaplasia (left) and carcinoma (right) by immunohistochemical analysis.

Sample: Paraffin-embedded human cervix.

Cytokeratin 17 antibody (GTx103765) diluted at 1:500.

Antigen Retrieval: Citrate buffer, pH 6.0, 15 min



For full product information, images and publications, please visit our [website](https://www.genetex.com).