

Creatine kinase (muscle) antibody [N1C3]

Cat. No. GTX103792

Host	Rabbit
Clonality	Polyclonal
Isotype	IgG
Applications	WB, IHC-P
Reactivity	Human, Cat, Dog

Package
100 µl, 25 µl

Applications

Application Note

*Optimal dilutions/concentrations should be determined by the researcher.

Suggested dilution	Recommended dilution
WB	1:500-1:3000
IHC-P	Assay dependent

Not tested in other applications.

Calculated MW 43 kDa. ([Note](#))

Properties

Form	Liquid
Buffer	PBS, 1% BSA, 20% Glycerol
Preservative	0.01% Thimerosal
Storage	Store as concentrated solution. Centrifuge briefly prior to opening vial. For short-term storage (1-2 weeks), store at 4°C. For long-term storage, aliquot and store at -20°C or below. Avoid multiple freeze-thaw cycles.
Concentration	0.71 mg/ml (Please refer to the vial label for the specific concentration.)
Immunogen	Recombinant protein encompassing a sequence within the center region of human Creatine kinase (muscle). The exact sequence is proprietary.
Purification	Purified by antigen-affinity chromatography.
Conjugation	Unconjugated

Note

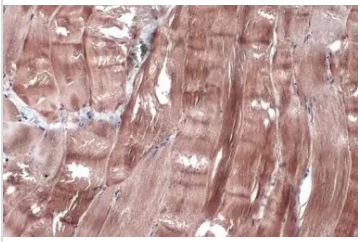
For laboratory research use only. Not for any clinical, therapeutic, or diagnostic use in humans or animals. Not for animal or human consumption.

Purchasers shall not, and agree not to enable third parties to, analyze, copy, reverse engineer or otherwise attempt to determine the structure or sequence of the product.



For full product information, images and publications, please visit our [website](#).

DATA IMAGES



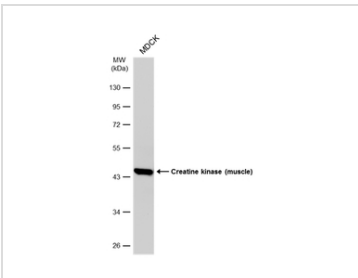
GTx103792 IHC-P Image

Creatine kinase (muscle) detects Creatine kinase (muscle) protein at cytoplasm by immunohistochemical analysis.

Sample: Paraffin-embedded cat muscle.

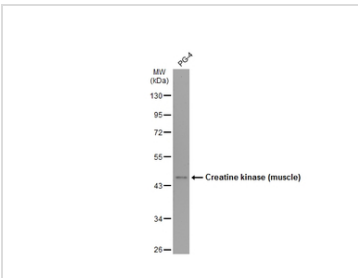
Creatine kinase (muscle) stained by Creatine kinase (muscle) antibody (GTx103792) diluted at 1:1000.

Antigen Retrieval: Citrate buffer, pH 6.0, 15 min



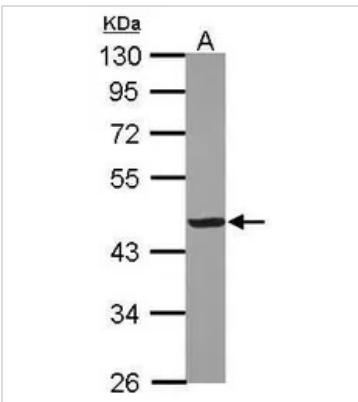
GTx103792 WB Image

Whole cell extract (30 µg) was separated by 10% SDS-PAGE, and the membrane was blotted with Creatine kinase (muscle) antibody (GTx103792) diluted at 1:1000. The HRP-conjugated anti-rabbit IgG antibody (GTx213110-01) was used to detect the primary antibody.



GTx103792 WB Image

Whole cell extract (30 µg) was separated by 10% SDS-PAGE, and the membrane was blotted with Creatine kinase (muscle) antibody (GTx103792) diluted at 1:1000. The HRP-conjugated anti-rabbit IgG antibody (GTx213110-01) was used to detect the primary antibody.



GTx103792 WB Image

Sample (30 ug of whole cell lysate)

A: HeLa

10% SDS PAGE

GTx103792 diluted at 1:1000



For full product information, images and publications, please visit our [website](https://www.genetex.com).