

L3MBTL1 antibody

Cat. No. GTX103793

Host	Rabbit
Clonality	Polyclonal
Isotype	IgG
Applications	WB, ICC/IF, IHC-Fr
Reactivity	Human, Caenorhabditis elegans

References (1)

Package
100 µl, 25 µl

Applications

Application Note

*Optimal dilutions/concentrations should be determined by the researcher.

Suggested dilution	Recommended dilution
WB	1:500-1:3000
ICC/IF	1:100-1:1000
IHC-Fr	Assay dependent

Not tested in other applications.

Calculated MW 84 kDa. ([Note](#))

Properties

Form	Liquid
Buffer	0.1M Tris, 0.1M Glycine, 10% Glycerol
Preservative	0.01% Thimerosal
Storage	Store as concentrated solution. Centrifuge briefly prior to opening vial. For short-term storage (1-2 weeks), store at 4°C. For long-term storage, aliquot and store at -20°C or below. Avoid multiple freeze-thaw cycles.
Concentration	1 mg/ml (Please refer to the vial label for the specific concentration.)
Immunogen	Recombinant protein encompassing a sequence within the center region of human L3MBTL1. The exact sequence is proprietary.
Purification	Purified by antigen-affinity chromatography.
Conjugation	Unconjugated

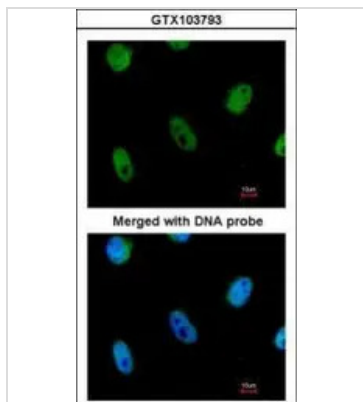
Note For laboratory research use only. Not for any clinical, therapeutic, or diagnostic use in humans or animals. Not for animal or human consumption.

Purchasers shall not, and agree not to enable third parties to, analyze, copy, reverse engineer or otherwise attempt to determine the structure or sequence of the product.



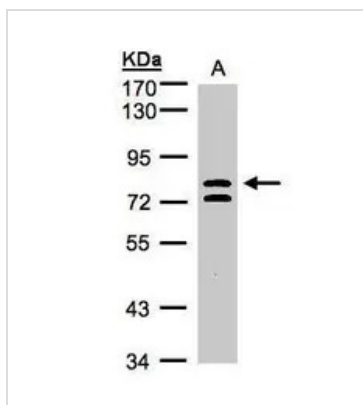
For full product information, images and publications, please visit our [website](#).

DATA IMAGES



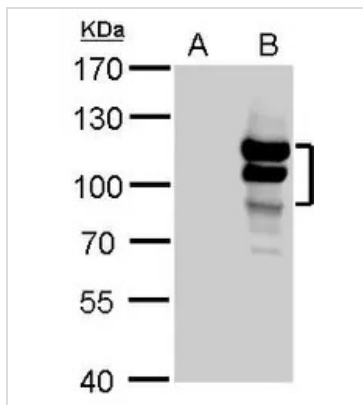
GTX103793 ICC/IF Image

Immunofluorescence analysis of paraformaldehyde-fixed HeLa, using L3MBTL(GTX103793) antibody at 1:200 dilution.



GTX103793 WB Image

Sample(30 ug whole cell lysate)
A:HeLa S3(GTX14654)
7.5% SDS PAGE
GTX103793 diluted at 1:1000



GTX103793 WB Image

L3MBTL antibody detects L3MBTL protein by Western blot analysis.
A. 30 µg 293T whole cell lysate/extract
B. 30 µg whole cell lysate/extract of human L3MBTL-transfected 293T cells
7.5 % SDS-PAGE
L3MBTL antibody (GTX103793) dilution: 1:5000



For full product information, images and publications, please visit our [website](#).