

Dishevelled 2 antibody [N2C2], Internal

Cat. No. GTX103878

Host	Rabbit
Clonality	Polyclonal
Isotype	IgG
Applications	WB, IHC-P, IHC-Fr
Reactivity	Human, Mouse, Zebrafish

References (2)

Package

100 µl, 25 µl

Applications

Application Note

*Optimal dilutions/concentrations should be determined by the researcher.

Suggested dilution	Recommended dilution
WB	1:500-1:3000
IHC-P	1:100-1:1000
IHC-Fr	Assay dependent

Not tested in other applications.

Calculated MW 79 kDa. ([Note](#))

Properties

Form	Liquid
Buffer	0.1M Tris, 0.1M Glycine, 10% Glycerol
Preservative	0.01% Thimerosal
Storage	Store as concentrated solution. Centrifuge briefly prior to opening vial. For short-term storage (1-2 weeks), store at 4°C. For long-term storage, aliquot and store at -20°C or below. Avoid multiple freeze-thaw cycles.
Concentration	1.04 mg/ml (Please refer to the vial label for the specific concentration.)
Immunogen	Recombinant protein encompassing a sequence within the center region of human Dishevelled 2. The exact sequence is proprietary.
Purification	Purified by antigen-affinity chromatography.
Conjugation	Unconjugated

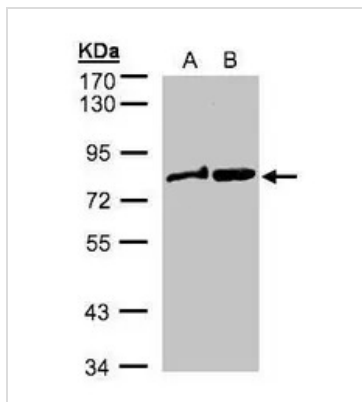
Note

For laboratory research use only. Not for any clinical, therapeutic, or diagnostic use in humans or animals. Not for animal or human consumption.

Purchasers shall not, and agree not to enable third parties to, analyze, copy, reverse engineer or otherwise attempt to determine the structure or sequence of the product.



For full product information, images and publications, please visit our [website](#).

DATA IMAGES

GTX103878 WB Image

Sample(30 µg whole cell lysate)

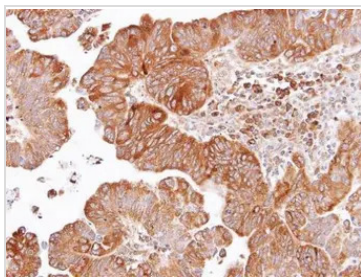
A: MOLT4 (GTX27912)

B: Raji (GTX27908)

7.5% SDS PAGE

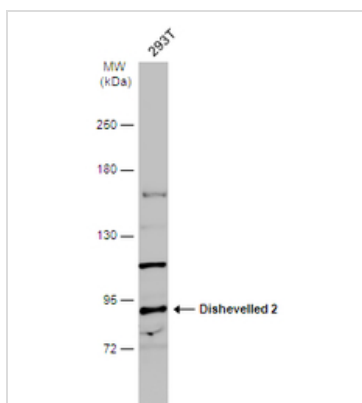
GTX103878 diluted at 1:500

The HRP-conjugated anti-rabbit IgG antibody (GTX213110-01) was used to detect the primary antibody.

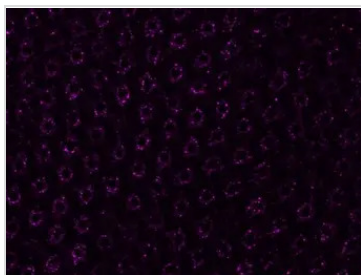

GTX103878 IHC-P Image

Immunohistochemical analysis of paraffin-embedded human lung SCC, using Dishevelled 2(GTX103878) antibody at 1:100 dilution.

Antigen Retrieval: Citrate buffer, pH 6.0, 15 min


GTX103878 WB Image

Whole cell extract (50 µg) was separated by 5% SDS-PAGE, and the membrane was blotted with Dishevelled 2 antibody [N2C2], Internal (GTX103878) diluted at 1:500. The HRP-conjugated anti-rabbit IgG antibody (GTX213110-01) was used to detect the primary antibody, and the signal was developed with Trident ECL plus-Enhanced.


GTX103878 Image

cytoplasm in the photoreceptor

Immunohistochemistry of flat-mounted zebrafish retina using an antibody against Dishevelled 2 antibody [N2C2], Internal (GTX103878) at a 1:200 dilution.



For full product information, images and publications, please visit our [website](http://www.genetex.com).