

CNPase antibody

Cat. No. GTX103954

Host	Rabbit
Clonality	Polyclonal
Isotype	IgG
Applications	WB, ICC/IF, IHC-P, IHC-Fr
Reactivity	Human, Mouse, Rat

References (1)

Package

100 µl, 25 µl

Applications

Application Note

*Optimal dilutions/concentrations should be determined by the researcher.

Suggested dilution	Recommended dilution
WB	1:500-1:10000
ICC/IF	Assay dependent
IHC-P	1:100-1:1000
IHC-Fr	1:100-1:1000

Not tested in other applications.

Calculated MW 48 kDa. ([Note](#))

Properties

Form	Liquid
Buffer	PBS, 1% BSA, 20% Glycerol
Preservative	0.025% ProClin 300
Storage	Store as concentrated solution. Centrifuge briefly prior to opening vial. For short-term storage (1-2 weeks), store at 4°C. For long-term storage, aliquot and store at -20°C or below. Avoid multiple freeze-thaw cycles.
Concentration	0.41 mg/ml (Please refer to the vial label for the specific concentration.)
Immunogen	Recombinant protein encompassing a sequence within the center region of human CNPase. The exact sequence is proprietary.
Purification	Purified by antigen-affinity chromatography.
Conjugation	Unconjugated



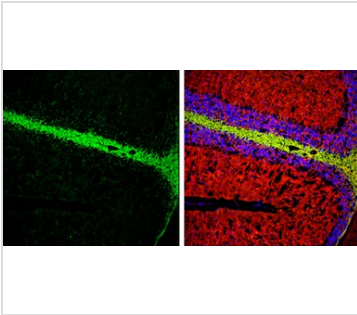
For full product information, images and publications, please visit our [website](#).

For laboratory research use only. Not for any clinical, therapeutic, or diagnostic use in humans or animals. Not for animal or human consumption.

Note

Purchasers shall not, and agree not to enable third parties to, analyze, copy, reverse engineer or otherwise attempt to determine the structure or sequence of the product.

DATA IMAGES



GTX103954 IHC-Fr Image

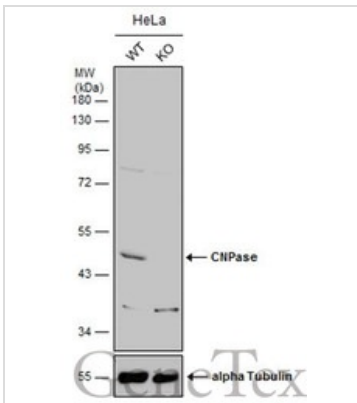
CNPase antibody detects CNPase protein expression by immunohistochemical analysis.

Sample: Frozen-sectioned adult mouse cerebellum.

Green: CNPase protein stained by CNPase antibody (GTX103954) diluted at 1:250.

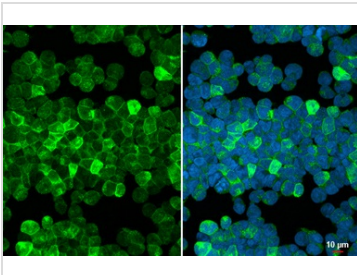
Red: beta Tubulin 3/ TUJ1, stained by beta Tubulin 3/ TUJ1 antibody [GT11710] (GTX631836) diluted at 1:500.

Blue: Fluoroshield with DAPI (GTX30920).



GTX103954 WB Image

Wild-type (WT) and CNPase knockout (KO) HeLa cell extracts (30 µg) were separated by 10% SDS-PAGE, and the membrane was blotted with CNPase antibody (GTX103954) diluted at 1:500. The HRP-conjugated anti-rabbit IgG antibody (GTX213110-01) was used to detect the primary antibody.



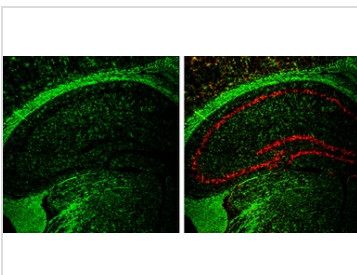
GTX103954 ICC/IF Image

CNPase antibody detects CNPase protein at cell membrane by immunofluorescent analysis.

Sample: MOLT-4 cells were fixed in 4% paraformaldehyde at RT for 15 min.

Green: CNPase stained by CNPase antibody (GTX103954) diluted at 1:500.

Blue: Fluoroshield with DAPI (GTX30920).



GTX103954 IHC-Fr Image

CNPase antibody detects CNPase protein expression by immunohistochemical analysis.

Sample: Frozen-sectioned adult mouse hippocampus.

Green: CNPase protein stained by CNPase antibody (GTX103954) diluted at 1:250.

Red: NeuN, stained by NeuN antibody [2Q158] (GTX30773) diluted at 1:500.



For full product information, images and publications, please visit our [website](https://www.genetex.com).