

EIF4E2 antibody [N1C3]

Cat. No. GTX103977

Host	Rabbit
Clonality	Polyclonal
Isotype	IgG
Applications	WB, IP
Reactivity	Human, Mouse

References (18)

Package

100 µl, 25 µl

Applications

Application Note

*Optimal dilutions/concentrations should be determined by the researcher.

Suggested dilution	Recommended dilution
WB	Assay dependent
IP	Assay dependent

Not tested in other applications.

Calculated MW 28 kDa. ([Note](#))

Product Note KO/KD validation is based on published data (PMID: 29412140 and 30902983).

Properties

Form	Liquid
Buffer	PBS, 20% Glycerol
Preservative	0.025% ProClin 300
Storage	Store as concentrated solution. Centrifuge briefly prior to opening vial. For short-term storage (1-2 weeks), store at 4°C. For long-term storage, aliquot and store at -20°C or below. Avoid multiple freeze-thaw cycles.
Concentration	1.15 mg/ml (Please refer to the vial label for the specific concentration.)
Immunogen	Recombinant protein encompassing a sequence within the center region of human EIF4E2. The exact sequence is proprietary.
Purification	Purified by antigen-affinity chromatography.
Conjugation	Unconjugated

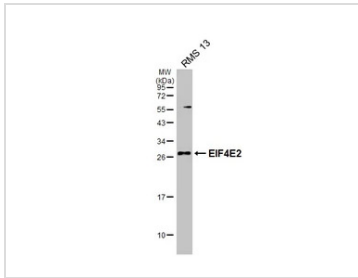
Note

For laboratory research use only. Not for any clinical, therapeutic, or diagnostic use in humans or animals. Not for animal or human consumption.

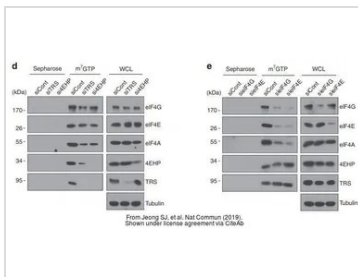
Purchasers shall not, and agree not to enable third parties to, analyze, copy, reverse engineer or otherwise attempt to determine the structure or sequence of the product.

For full product information, images and publications, please visit our [website](#).

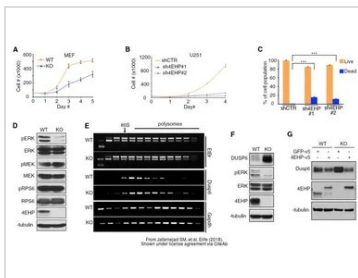
DATA IMAGES

**GTX103977 WB Image**

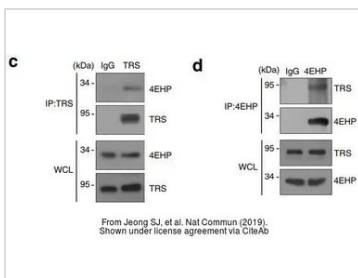
Whole cell extract (30 µg) was separated by 12% SDS-PAGE, and the membrane was blotted with EIF4E2 antibody [N1C3] (GTX103977) diluted at 1:500. The HRP-conjugated anti-rabbit IgG antibody (GTX213110-01) was used to detect the primary antibody.

**GTX103977 WB Image**

The data was published in the journal Nat Commun in 2019. [PMID: 30902983](https://pubmed.ncbi.nlm.nih.gov/30902983/)

**GTX103977 WB Image**

The data was published in the journal Elife in 2018. [PMID: 29412140](https://pubmed.ncbi.nlm.nih.gov/29412140/)

**GTX103977 WB IP Image**

The data was published in the journal Nat Commun in 2019. [PMID: 30902983](https://pubmed.ncbi.nlm.nih.gov/30902983/)



For full product information, images and publications, please visit our [website](https://www.genetex.com).