

Pyruvate Dehydrogenase E1 alpha antibody

Cat. No. GTX104015

Host	Rabbit
Clonality	Polyclonal
Isotype	IgG
Applications	WB, ICC/IF, IHC-P, IHC-Wm, IP, IHC (Free Floating)
Reactivity	Human, Mouse, Rat, Zebrafish

References (14)

Package

100 µl, 25 µl

Applications

Application Note

*Optimal dilutions/concentrations should be determined by the researcher.

Suggested dilution	Recommended dilution
WB	1:500-1:10000
ICC/IF	1:100-1:1000
IHC-P	1:100-1:1000
IHC-Wm	Assay dependent
IP	1:100-1:500
IHC (Free Floating)	Assay dependent

Not tested in other applications.

Calculated MW 43 kDa. ([Note](#))

Properties

Form	Liquid
Buffer	PBS, 20% Glycerol
Preservative	0.025% ProClin 300
Storage	Store as concentrated solution. Centrifuge briefly prior to opening vial. For short-term storage (1-2 weeks), store at 4°C. For long-term storage, aliquot and store at -20°C or below. Avoid multiple freeze-thaw cycles.
Concentration	1.39 mg/ml (Please refer to the vial label for the specific concentration.)
Immunogen	Recombinant protein encompassing a sequence within the center region of human Pyruvate Dehydrogenase E1 alpha. The exact sequence is proprietary.
Purification	Purified by antigen-affinity chromatography.
Conjugation	Unconjugated

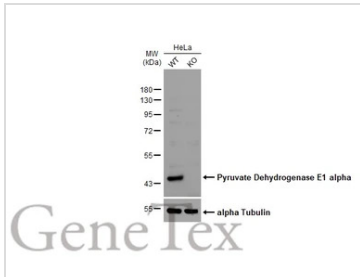


For full product information, images and publications, please visit our [website](#).

For laboratory research use only. Not for any clinical, therapeutic, or diagnostic use in humans or animals. Not for animal or human consumption.

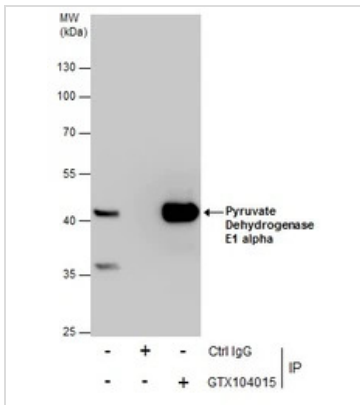
Note
 Purchasers shall not, and agree not to enable third parties to, analyze, copy, reverse engineer or otherwise attempt to determine the structure or sequence of the product.

DATA IMAGES



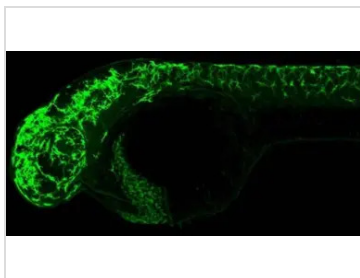
GTX104015 WB Image

Wild-type (WT) and Pyruvate Dehydrogenase E1 alpha knockout (KO) HeLa cell extracts (30 µg) were separated by 10% SDS-PAGE, and the membrane was blotted with Pyruvate Dehydrogenase E1 alpha antibody (GTX104015) diluted at 1:1000. The HRP-conjugated anti-rabbit IgG antibody (GTX213110-01) was used to detect the primary antibody.



GTX104015 IP Image

Immunoprecipitation of Pyruvate Dehydrogenase E1 alpha protein from HepG2 whole cell extracts using 5 µg of Pyruvate Dehydrogenase E1 alpha antibody (GTX104015). Western blot analysis was performed using Pyruvate Dehydrogenase E1 alpha antibody (GTX104015). EasyBlot anti-Rabbit IgG (GTX221666-01) was used as a secondary reagent.



GTX104015 IHC-Wm Image

Immunohistochemical analysis (whole mount) of zebrafish embryo, using Pyruvate Dehydrogenase E1 alpha antibody (GTX104015) at 1:200 dilution.



For full product information, images and publications, please visit our [website](#).