

GABA A Receptor alpha 1 antibody [N1C1]

Cat. No. GTX104027

Host	Rabbit
Clonality	Polyclonal
Isotype	IgG
Applications	WB, IHC-P
Reactivity	Human, Rat

References (1)

Package

100 µl, 25 µl

Applications

Application Note

*Optimal dilutions/concentrations should be determined by the researcher.

Suggested dilution	Recommended dilution
WB	1:500-1:3000
IHC-P	1:100-1:1000

Not tested in other applications.

Calculated MW 52 kDa. ([Note](#))

Properties

Form	Liquid
Buffer	PBS, 20% Glycerol
Preservative	0.025% ProClin 300
Storage	Store as concentrated solution. Centrifuge briefly prior to opening vial. For short-term storage (1-2 weeks), store at 4°C. For long-term storage, aliquot and store at -20°C or below. Avoid multiple freeze-thaw cycles.
Concentration	1 mg/ml (Please refer to the vial label for the specific concentration.)
Immunogen	Recombinant protein encompassing a sequence within the Extracellular domain of human GABA A Receptor alpha 1. The exact sequence is proprietary.
Purification	Purified by antigen-affinity chromatography.
Conjugation	Unconjugated

Note

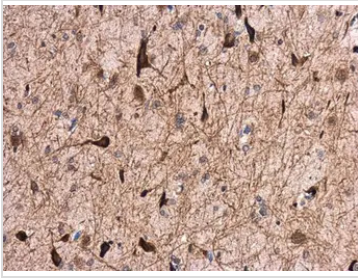
For laboratory research use only. Not for any clinical, therapeutic, or diagnostic use in humans or animals. Not for animal or human consumption.

Purchasers shall not, and agree not to enable third parties to, analyze, copy, reverse engineer or otherwise attempt to determine the structure or sequence of the product.



For full product information, images and publications, please visit our [website](#).

DATA IMAGES



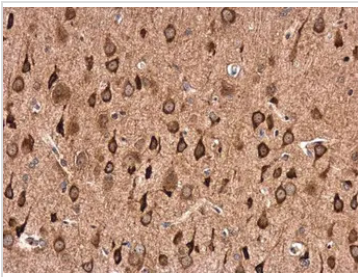
GTX104027 IHC-P Image

GABA A Receptor alpha 1 antibody [N1C1] detects GABA A Receptor alpha 1 protein at cytoplasm in rat brain by immunohistochemical analysis.

Sample: Paraffin-embedded rat brain.

GABA A Receptor alpha 1 antibody [N1C1] (GTX104027) diluted at 1:500.

Antigen Retrieval: Citrate buffer, pH 6.0, 15 min



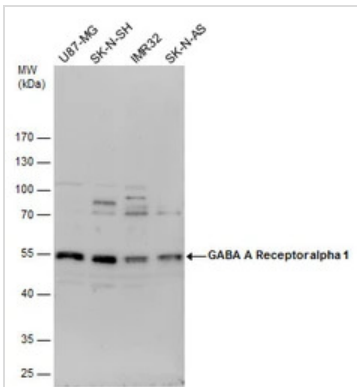
GTX104027 IHC-P Image

GABA A Receptor alpha 1 antibody [N1C1] detects GABA A Receptor alpha 1 protein at cytoplasm in rat brain by immunohistochemical analysis.

Sample: Paraffin-embedded rat brain.

GABA A Receptor alpha 1 antibody [N1C1] (GTX104027) diluted at 1:500.

Antigen Retrieval: Citrate buffer, pH 6.0, 15 min



GTX104027 WB Image

GABA A Receptor alpha 1 antibody detects GABA A Receptor alpha 1 protein by Western blot analysis.

Various whole cell extracts (30 µg) were separated by 10% SDS-PAGE, and the membrane was blotted with GABA A Receptor alpha 1 antibody (GTX104027) diluted by 1:500.



For full product information, images and publications, please visit our [website](https://www.genetex.com).