

PGP9.5 antibody

Cat. No. GTX10404

Host	Rabbit
Clonality	Polyclonal
Isotype	IgG
Applications	WB, IHC-Fr, IHC
Reactivity	Human, Mouse, Rat, Pig

Package
50 µl

Applications

Application Note

*Optimal dilutions/concentrations should be determined by the researcher.

Suggested dilution	Recommended dilution
WB	1:1000
IHC-Fr	1:100-1:500
IHC	Assay dependent

Not tested in other applications.

Calculated MW 25 kDa. ([Note](#))

Properties

Form	Liquid
Buffer	Serum
Preservative	0.05% Sodium azide
Storage	Store as concentrated solution. Centrifuge briefly prior to opening vial. For short-term storage (1-2 weeks), store at 4°C. For long-term storage, aliquot and store at -20°C or below. Avoid multiple freeze-thaw cycles.
Immunogen	ASSEDLLKDAAKVCR
Purification	Unpurified
Conjugation	Unconjugated

Note

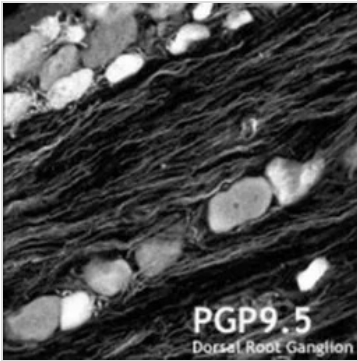
For laboratory research use only. Not for any clinical, therapeutic, or diagnostic use in humans or animals. Not for animal or human consumption.

Purchasers shall not, and agree not to enable third parties to, analyze, copy, reverse engineer or otherwise attempt to determine the structure or sequence of the product.

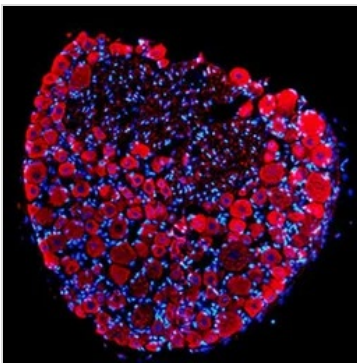


For full product information, images and publications, please visit our [website](#).

DATA IMAGES

**GTX10404 IHC-Fr Image**

IHC-Fr analysis of rat dorsal root ganglion using GTX10404 PGP9.5 antibody.

**GTX10404 IHC Image**

IHC analysis of rat DRG tissue using GTX10404 PGP9.5 antibody.

Dilution : 1:500



For full product information, images and publications, please visit our [website](#).