

IL3 Receptor beta antibody [N1N3]

Cat. No. GTX104118

Host	Rabbit
Clonality	Polyclonal
Isotype	IgG
Applications	ICC/IF, FCM
Reactivity	Human

★★★★★ Review (1)

Package
100 µl, 25 µl

Applications

Application Note

*Optimal dilutions/concentrations should be determined by the researcher.

Suggested dilution	Recommended dilution
ICC/IF	1:100-1:1000
FCM	Assay dependent

Not tested in other applications.

Properties

Form	Liquid
Buffer	0.1M Tris, 0.1M Glycine, 10% Glycerol
Preservative	0.01% Thimerosal
Storage	Store as concentrated solution. Centrifuge briefly prior to opening vial. For short-term storage (1-2 weeks), store at 4°C. For long-term storage, aliquot and store at -20°C or below. Avoid multiple freeze-thaw cycles.
Concentration	1 mg/ml (Please refer to the vial label for the specific concentration.)
Immunogen	Recombinant fragment of human IL3 Receptor beta.
Conjugation	Unconjugated

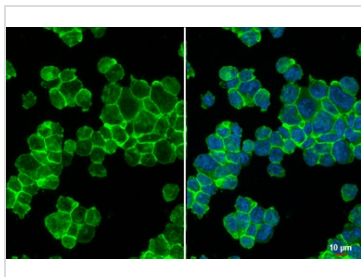
Note

For laboratory research use only. Not for any clinical, therapeutic, or diagnostic use in humans or animals. Not for animal or human consumption.

Purchasers shall not, and agree not to enable third parties to, analyze, copy, reverse engineer or otherwise attempt to determine the structure or sequence of the product.

For full product information, images and publications, please visit our [website](#).

DATA IMAGES



GTX104118 ICC/IF Image

IL3 Receptor beta antibody [N1N3] detects IL3 Receptor beta protein at cell membrane by immunofluorescent analysis.

Sample: THP-1 cells were fixed in 4% paraformaldehyde at RT for 15 min.

Green: IL3 Receptor beta stained by IL3 Receptor beta antibody [N1N3] (GTX104118) diluted at 1:500.

Blue: Fluoroshield with DAPI (GTX30920).



For full product information, images and publications, please visit our [website](#).