

## P2X7 antibody

**Cat. No. GTX104288**

<b>Host</b>	Rabbit
<b>Clonality</b>	Polyclonal
<b>Isotype</b>	IgG
<b>Applications</b>	IHC-P, IHC-Fr
<b>Reactivity</b>	Human, Mouse, Rat

[References \( 2 \)](#)

[Package](#)

100 µl, 25 µl

### Applications

#### Application Note

\*Optimal dilutions/concentrations should be determined by the researcher.

Suggested dilution	Recommended dilution
IHC-P	1:100-1:1000
IHC-Fr	1:100-1:1000

Not tested in other applications.

### Properties

<b>Form</b>	Liquid
<b>Buffer</b>	0.1M Tris, 0.1M Glycine, 10% Glycerol
<b>Preservative</b>	0.01% Thimerosal
<b>Storage</b>	Store as concentrated solution. Centrifuge briefly prior to opening vial. For short-term storage (1-2 weeks), store at 4°C. For long-term storage, aliquot and store at -20°C or below. Avoid multiple freeze-thaw cycles.
<b>Concentration</b>	1 mg/ml (Please refer to the vial label for the specific concentration.)
<b>Immunogen</b>	Recombinant protein encompassing a sequence within the center region of human P2X7. The exact sequence is proprietary.
<b>Purification</b>	Purified by antigen-affinity chromatography.
<b>Conjugation</b>	Unconjugated

#### Note

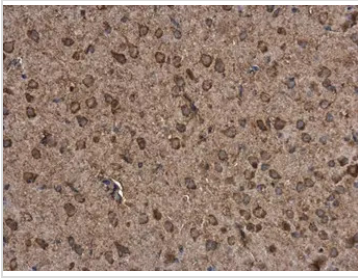
For laboratory research use only. Not for any clinical, therapeutic, or diagnostic use in humans or animals. Not for animal or human consumption.

Purchasers shall not, and agree not to enable third parties to, analyze, copy, reverse engineer or otherwise attempt to determine the structure or sequence of the product.



For full product information, images and publications, please visit our [website](#).

## DATA IMAGES



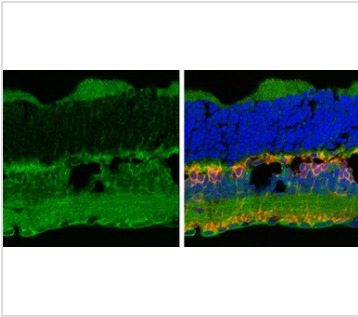
### GTx104288 IHC-P Image

P2X7 antibody detects P2X7 protein at cell membrane and cytoplasm in rat brain by immunohistochemical analysis.

Sample: Paraffin-embedded rat brain.

P2X7 antibody (GTx104288) diluted at 1:500.

Antigen Retrieval: Citrate buffer, pH 6.0, 15 min



### GTx104288 IHC-Fr Image

P2X7 antibody detects P2X7 protein by immunohistochemical analysis.

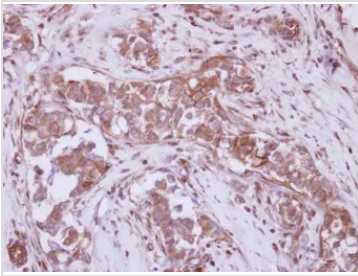
Sample: Frozen sectioned adult mouse retina.

Green: P2X7 protein stained by P2X7 antibody (GTx104288) diluted at 1:250.

Red: Protein kinase C alpha staining.

Blue: Fluoroshield with DAPI (GTx30920).

Antigen Retrieval: Citrate buffer, pH 6.0, 15 min



### GTx104288 IHC-P Image

Immunohistochemical analysis of paraffin-embedded human breast cancer, using P2X7(GTx104288) antibody at 1:250 dilution.

Antigen Retrieval: Citrate buffer, pH 6.0, 15 min



For full product information, images and publications, please visit our [website](#).