

AKT1 antibody [PKB-175]

Cat. No. GTX10438

Host	Mouse
Clonality	Monoclonal
Isotype	IgG1
Applications	WB, IP, ELISA
Reactivity	Human, Mouse, Rat, Bovine, Chicken

Package

50 µl

Applications

Application Note

*Optimal dilutions/concentrations should be determined by the researcher.

Suggested dilution	Recommended dilution
WB	1:5,000
IP	Assay dependent
ELISA	Assay dependent

Not tested in other applications.

Calculated MW 56 kDa. ([Note](#))

Properties

Form	Liquid
Buffer	Ascites
Preservative	15mM Sodium azide
Storage	Store as concentrated solution. Centrifuge briefly prior to opening vial. For short-term storage (1-2 weeks), store at 4°C. For long-term storage, aliquot and store at -20°C or below. Avoid multiple freeze-thaw cycles.
Immunogen	Synthetic peptide corresponding to amino acids 461-477 of human PKBα/Akt1, conjugated to KLH. The sequence is identical in mouse, rat, and bovine PKBα/Akt1, highly conserved in PKBβ/Akt2, and diverges in PKBy.
Purification	Unpurified
Conjugation	Unconjugated

Note

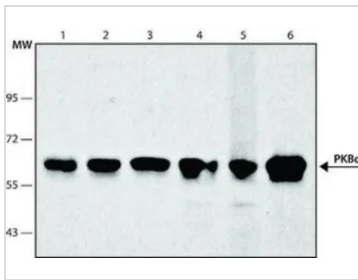
For laboratory research use only. Not for any clinical, therapeutic, or diagnostic use in humans or animals. Not for animal or human consumption.

Purchasers shall not, and agree not to enable third parties to, analyze, copy, reverse engineer or otherwise attempt to determine the structure or sequence of the product.



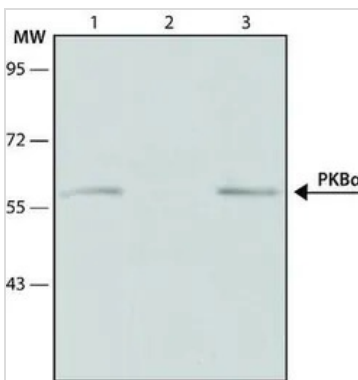
For full product information, images and publications, please visit our [website](#).

DATA IMAGES



GTx10438 WB Image

WB analysis of (1)HeLa (2) HepG2 (3) A549 (4) HEK-293 (5) JURKAT (6) MCF-7 cells using GTx10438 AKT1 antibody [PKB-175] at 1:5,000.



GTx10438 IP Image

IP analysis of MCF-7 cells using GTx10438 AKT1 antibody [PKB-175].

Lane 1 : IP from MCF-7 cells using 10 µL antibody

Lane 2 : IP from MCF-7 cells using 10 µL nonrelevant antibody

Lane 3 : MCF-7 whole cell lysate



For full product information, images and publications, please visit our [website](https://www.genetex.com).