

ARTS antibody [ARTS51]

Cat. No. GTX10440

Host	Mouse
Clonality	Monoclonal
Isotype	IgG2b
Applications	WB, ICC/IF, IP, ELISA
Reactivity	Human

Package

50 µl

Applications

Application Note

*Optimal dilutions/concentrations should be determined by the researcher.

Suggested dilution	Recommended dilution
WB	0.5-1 µg/ml
ICC/IF	Assay dependent
IP	10µl
ELISA	Assay dependent

Not tested in other applications.

Calculated MW 55 kDa. ([Note](#))**Product Note**

This monoclonal anti-ARTS antibody was used to detect ARTS (Sept4_i2) protein in whole lysates of HeLa cells. HeLa ARTS knockdown (ARTS KD) stable cell line was established by using short hairpin RNAs (shRNAs) which abrogated specifically the endogenous levels of ARTS (Sept4_i2, ~30Kd)[4] This monoclonal Ab is the only currently commercially available antibody directed against the unique C-terminus of ARTS, that can distinguish between ARTS (the pro-apoptotic, tumor suppressor, specific XIAP- antagonist) and Sept4_i1 (H5, PNU TL), which is the other product of the SEPT4 gene[3].

Properties

Form	Liquid
Buffer	PBS
Preservative	15mM Sodium azide
Storage	Store as concentrated solution. Centrifuge briefly prior to opening vial. For short-term storage (1-2 weeks), store at 4°C. For long-term storage, aliquot and store at -20°C or below. Avoid multiple freeze-thaw cycles.
Concentration	~2 mg/ml (Please refer to the vial label for the specific concentration.)
Immunogen	synthetic peptide corresponding to C-terminal region (amino acids 247-266) of human ARTS protein, conjugated to KLH.
Purification	Purified immunoglobulin
Conjugation	Unconjugated



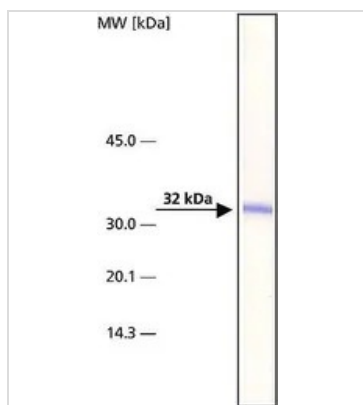
For full product information, images and publications, please visit our [website](#).

For laboratory research use only. Not for any clinical, therapeutic, or diagnostic use in humans or animals. Not for animal or human consumption.

Note

Purchasers shall not, and agree not to enable third parties to, analyze, copy, reverse engineer or otherwise attempt to determine the structure or sequence of the product.

DATA IMAGES



GTX10440 WB Image

WB analysis of 293T cells transfected with ARTS plasmid using GTX10440 ARTS antibody [ARTS51] at 1:4000.



For full product information, images and publications, please visit our [website](https://www.genetex.com).