

# Grp75 antibody

**Cat. No. GTX104407**

<b>Host</b>	Rabbit
<b>Clonality</b>	Polyclonal
<b>Isotype</b>	IgG
<b>Application</b>	WB, ICC/IF, IHC-P, IP
<b>Reactivity</b>	Human, Mouse, Rat, Pig

Reference ( 4 )

★★★★★ Review ( 3 )

Package

100 µl, 25 µl

## APPLICATION

### Application Note

\*Optimal dilutions/concentrations should be determined by the researcher.

Suggested dilution	Recommended dilution
WB	1:500-1:3000
ICC/IF	1:100-1:1000
IHC-P	1:100-1:1000
IP	1:100-1:500

Not tested in other applications.

**Calculated MW** 74 kDa. ( [Note](#) )

**Product Note** Knockdown/Knockout validation was supported by customer review data.

## PROPERTIES

<b>Form</b>	Liquid
<b>Buffer</b>	PBS, 1% BSA, 20% Glycerol
<b>Preservative</b>	0.025% ProClin 300
<b>Storage</b>	Store as concentrated solution. Centrifuge briefly prior to opening vial. For short-term storage (1-2 weeks), store at 4°C. For long-term storage, aliquot and store at -20°C or below. Avoid multiple freeze-thaw cycles.
<b>Concentration</b>	0.42 mg/ml (Please refer to the vial label for the specific concentration.)
<b>Immunogen</b>	Recombinant protein encompassing a sequence within the center region of human Grp75. The exact sequence is proprietary.
<b>Purification</b>	Purified by antigen-affinity chromatography.
<b>Conjugation</b>	Unconjugated

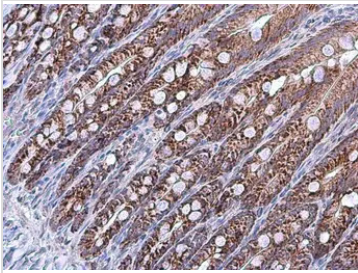


For full product information, images and publications, please visit our [website](#).

For laboratory research use only. Not for any clinical, therapeutic, or diagnostic use in humans or animals. Not for animal or human consumption.

**Note**

Purchasers shall not, and agree not to enable third parties to, analyze, copy, reverse engineer or otherwise attempt to determine the structure or sequence of the product.

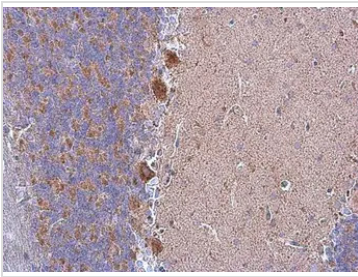
**DATA IMAGES**

**GTx104407 IHC-P Image**

Grp75 antibody detects Grp75 protein at mitochondria in rat duodenum by immunohistochemical analysis.

Sample: Paraffin-embedded rat duodenum.

Grp75 antibody (GTx104407) diluted at 1:500.

Antigen Retrieval: Citrate buffer, pH 6.0, 15 min

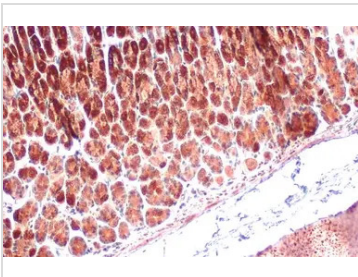

**GTx104407 IHC-P Image**

Grp75 antibody detects Grp75 protein at mitochondria in rat brain by immunohistochemical analysis.

Sample: Paraffin-embedded rat brain.

Grp75 antibody (GTx104407) diluted at 1:500.

Antigen Retrieval: Citrate buffer, pH 6.0, 15 min

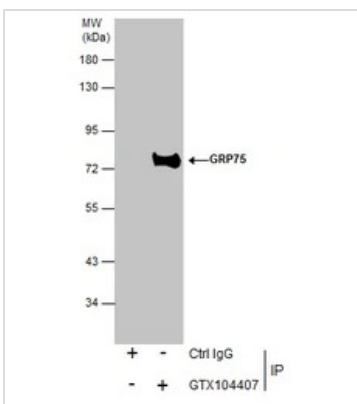

**GTx104407 IHC-P Image**

Grp75 antibody detects Grp75 protein at cytoplasm by immunohistochemical analysis.

Sample: Paraffin-embedded mouse stomach.

Grp75 stained by Grp75 antibody (GTx104407) diluted at 1:500.

Antigen Retrieval: Citrate buffer, pH 6.0, 15 min


**GTx104407 IP Image**

Immunoprecipitation of GRP75 protein from HepG2 whole cell extracts using 5 µg of GRP75 antibody (GTx104407).

Western blot analysis was performed using GRP75 antibody (GTx104407) diluted at 1:2500.

EasyBlot anti-Rabbit IgG (GTx221666-01) was used as a secondary reagent.



For full product information, images and publications, please visit our [website](https://www.genetex.com).